

Datasheet for ABIN2789474
anti-HLA-DMB antibody (N-Term)[Go to Product page](#)

2 Images

Overview

Quantity:	100 µL
Target:	HLA-DMB
Binding Specificity:	N-Term
Reactivity:	Human, Rat
Host:	Rabbit
Clonality:	Polyclonal
Conjugate:	This HLA-DMB antibody is un-conjugated
Application:	Western Blotting (WB), Immunohistochemistry (IHC)

Product Details

Sequence:	FTYCISFNKD LLTCWDPEEN KMAPCEFGVL NSLANVLSQH LNQKDTLMQR
Predicted Reactivity:	Human: 100%, Rat: 86%
Characteristics:	This is a rabbit polyclonal antibody against HLA-DMB. It was validated on Western Blot.
Purification:	Affinity Purified

Target Details

Target:	HLA-DMB
Alternative Name:	HLA-DMB (HLA-DMB Products)
Background:	HLA-DMB belongs to the HLA class II beta chain paralogues. This class II molecule is a heterodimer consisting of an alpha (DMA) and a beta (DMB) chain, both anchored in the

Target Details

membrane. It is located in intracellular vesicles. DM plays a central role in the peptide loading of MHC class II molecules by helping to release the CLIP (class II-associated invariant chain peptide) molecule from the peptide binding site. Class II molecules are expressed in antigen presenting cells (APC: B lymphocytes, dendritic cells, macrophages). The beta chain is approximately 26-28 kDa and its gene contains 6 exons. Exon one encodes the leader peptide, exons 2 and 3 encode the two extracellular domains, exon 4 encodes the transmembrane domain and exon 5 encodes the cytoplasmic tail.

Alias Symbols: D6S221E, RING7

Protein Interaction Partner: CUL3, TEAD1, MDM2, DPM2, CD82, HLA-DOB, CD63, HLA-DRA, HLA-DMA, CD74,

Protein Size: 263

Molecular Weight: 29 kDa

Gene ID: 3109

NCBI Accession: [NM_002118](#), [NP_002109](#)

UniProt: [P28068](#)

Pathways: [Cancer Immune Checkpoints](#), [Human Leukocyte Antigen \(HLA\) in Adaptive Immune Response](#)

Application Details

Application Notes: Optimal working dilutions should be determined experimentally by the investigator.

Comment: Antigen size: 263 AA

Restrictions: For Research Use only

Handling

Format: Liquid

Concentration: Lot specific

Buffer: Liquid. Purified antibody supplied in 1x PBS buffer with 0.09 % (w/v) sodium azide and 2 % sucrose.

Preservative: Sodium azide

Precaution of Use: This product contains Sodium azide: a POISONOUS AND HAZARDOUS SUBSTANCE which should be handled by trained staff only.

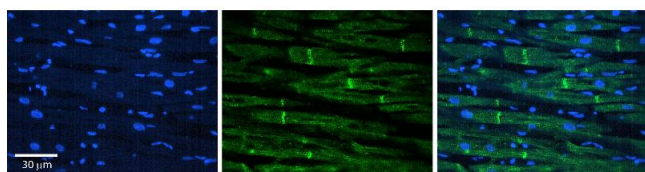
Handling Advice: Avoid repeated freeze-thaw cycles.

Handling

Storage: -20 °C

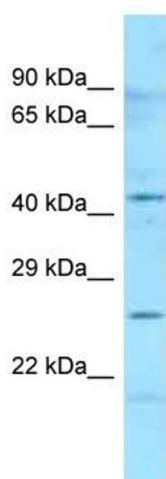
Storage Comment: For short term use, store at 2-8°C up to 1 week. For long term storage, store at -20°C in small aliquots to prevent freeze-thaw cycles.

Images



Immunohistochemistry

Image 1. Rabbit Anti-HLA-DMB Antibody Catalog Number: ARP63380_P050 Formalin Fixed Paraffin Embedded Tissue: Human heart Tissue Observed Staining: Plasma membrane in intercalated disk Primary Antibody Concentration: 1:100 Other Working Concentrations: N/A Secondary Antibody: Donkey anti-Rabbit-Cy3 Secondary Antibody Concentration: 1:200 Magnification: 20X Exposure Time: 0.5 - 2.0 sec



Rabbit Anti-HLA-DMB Antibody

Lot Number: QC34380

Lane: Placenta Lysate

Antibody Titration: 1.0µg/ml

Gel Concentration: 12%

Western Blotting

Image 2. Host: Rabbit Target Name: HLA-DMB Sample Type: Human Placenta Antibody Dilution: 1.0ug/ml