



[Go to Product page](#)

Datasheet for ABIN2789476
anti-TRO antibody (C-Term)

1 Image

Overview

Quantity:	100 µL
Target:	TRO
Binding Specificity:	C-Term
Reactivity:	Human
Host:	Rabbit
Clonality:	Polyclonal
Conjugate:	This TRO antibody is un-conjugated
Application:	Western Blotting (WB)

Product Details

Immunogen:	The immunogen is a synthetic peptide directed towards the C-terminal region of Human TRO
Sequence:	EAEARAEIYS PCLQIPLINC SSPSHGAKVH PWNLCPHSSQ GSYGQSAEGV
Predicted Reactivity:	Human: 100%
Characteristics:	This is a rabbit polyclonal antibody against TRO. It was validated on Western Blot.
Purification:	Affinity Purified

Target Details

Target:	TRO
Alternative Name:	TRO (TRO Products)
Background:	This gene encodes a membrane protein that mediates cell adhesion between trophoblastic

Target Details

cells and the epithelial cells of the endometrium. The encoded protein participates in cell signalling during embryo implantation, and may also be involved in cancer formation. This gene is located near several other closely related genes on chromosome X. Alternative splicing results in multiple transcript variants.

Alias Symbols: MAGE-d3, MAGED3

Protein Interaction Partner: FHL3, UBC, PRKCD, ERBB4, USP7, BYSL, FOS, TROAP,

Protein Size: 309

Molecular Weight: 33 kDa

Gene ID: 7216

NCBI Accession: [NM_177557](#), [NP_808225](#)

UniProt: [B1AKF1](#)

Application Details

Application Notes: Optimal working dilution should be determined by the investigator.

Restrictions: For Research Use only

Handling

Format: Liquid

Concentration: 1 mg/mL

Buffer: Liquid. Purified antibody supplied in 1x PBS buffer with 0.09 % (w/v) sodium azide and 2 % sucrose.

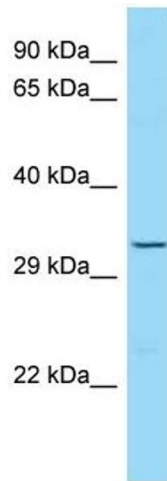
Preservative: Sodium azide

Precaution of Use: This product contains Sodium azide: a POISONOUS AND HAZARDOUS SUBSTANCE which should be handled by trained staff only.

Handling Advice: Avoid repeat freeze-thaw cycles.

Storage: -20 °C

Storage Comment: For short term use, store at 2-8°C up to 1 week. For long term storage, store at -20°C in small aliquots to prevent freeze-thaw cycles.



Western Blotting

Image 1.