

Datasheet for ABIN2789493
anti-RAP1A antibody (C-Term)



[Go to Product page](#)

1 Image

Overview

Quantity:	100 µL
Target:	RAP1A
Binding Specificity:	C-Term
Reactivity:	Human, Mouse, Rat, Cow, Guinea Pig, Rabbit, Horse, Dog, Goat, Zebrafish (Danio rerio)
Host:	Rabbit
Clonality:	Polyclonal
Conjugate:	This RAP1A antibody is un-conjugated
Application:	Western Blotting (WB)

Product Details

Immunogen:	The immunogen is a synthetic peptide directed towards the C-terminal region of Mouse Rap1a
Sequence:	GQNLARQWCN CAFLESSAKS KINVNEIFYD LVRQINRKTP VEKKKPKKKS
Predicted Reactivity:	Cow: 100%, Dog: 100%, Goat: 100%, Guinea Pig: 100%, Horse: 100%, Human: 100%, Mouse: 100%, Rabbit: 100%, Rat: 100%, Zebrafish: 100%
Characteristics:	This is a rabbit polyclonal antibody against Rap1a. It was validated on Western Blot.
Purification:	Affinity Purified

Target Details

Target:	RAP1A
Alternative Name:	Rap1a (RAP1A Products)

Target Details

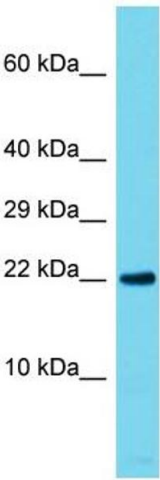
Background:	<p>Rap1a induces morphological reversion of a cell line transformed by a Ras oncogene. Rap1a counteracts the mitogenic function of Ras, at least partly because it can interact with Ras GAPs and RAF in a competitive manner.</p> <p>Alias Symbols: AI848598, G-22K, Krev-1, Rap1</p> <p>Protein Interaction Partner: Kcnma1, Foxp3, Grin2b, Grin1,</p> <p>Protein Size: 184</p>
Molecular Weight:	20 kDa
Gene ID:	109905
NCBI Accession:	NM_145541 , NP_663516
UniProt:	P62835
Pathways:	TCR Signaling , Neurotrophin Signaling Pathway , Signaling of Hepatocyte Growth Factor Receptor

Application Details

Application Notes:	Optimal working dilutions should be determined experimentally by the investigator.
Comment:	Antigen size: 184 AA
Restrictions:	For Research Use only

Handling

Format:	Liquid
Concentration:	Lot specific
Buffer:	Liquid. Purified antibody supplied in 1x PBS buffer with 0.09 % (w/v) sodium azide and 2 % sucrose.
Preservative:	Sodium azide
Precaution of Use:	This product contains Sodium azide: a POISONOUS AND HAZARDOUS SUBSTANCE which should be handled by trained staff only.
Handling Advice:	Avoid repeated freeze-thaw cycles.
Storage:	-20 °C
Storage Comment:	For short term use, store at 2-8°C up to 1 week. For long term storage, store at -20°C in small aliquots to prevent freeze-thaw cycles.



Western Blotting

Image 1. Host: Rabbit

Target Name: Rap1a

Sample Tissue: Mouse Testis lysates

Antibody Dilution: 1.0 µg/mL