



[Go to Product page](#)

Datasheet for ABIN2789497
anti-CLPX antibody (C-Term)

4 Images

Overview

Quantity:	100 µL
Target:	CLPX
Binding Specificity:	C-Term
Reactivity:	Human, Mouse, Rat, Cow, Dog, Horse, Pig, Rabbit, Guinea Pig, Zebrafish (Danio rerio)
Host:	Rabbit
Clonality:	Polyclonal
Conjugate:	This CLPX antibody is un-conjugated
Application:	Western Blotting (WB)

Product Details

Sequence:	MFEVNSDIV CVEVDKEVVE GKKEPGYIRA PTKESSEEEY DSGVEEEGW
Predicted Reactivity:	Cow: 100%, Dog: 100%, Guinea Pig: 86%, Horse: 100%, Human: 100%, Mouse: 93%, Pig: 100%, Rabbit: 79%, Rat: 93%, Zebrafish: 86%
Characteristics:	This is a rabbit polyclonal antibody against CLPX. It was validated on Western Blot.
Purification:	Affinity Purified

Target Details

Target:	CLPX
Alternative Name:	CLPX (CLPX Products)
Background:	CLPX is an ATP-dependent specificity component of the Clp protease. It directs the protease to

Target Details

specific substrates. CLPX can perform chaperone functions in the absence of clpP.

Alias Symbols: -

Protein Interaction Partner: FBXW11, UBC, RNF2, PARK2, FBXO6, C1QBP, GRB2, CUL1, CUL4B, EBNA-LP, Ybx1, ICT1, BABAM1, BTRC, CLPP, C20orf24,

Protein Size: 633

Molecular Weight: 70 kDa

Gene ID: 10845

NCBI Accession: [NM_006660](#), [NP_006651](#)

UniProt: [O76031](#)

Application Details

Application Notes: Optimal working dilutions should be determined experimentally by the investigator.

Comment: Antigen size: 633 AA

Restrictions: For Research Use only

Handling

Format: Liquid

Concentration: Lot specific

Buffer: Liquid. Purified antibody supplied in 1x PBS buffer with 0.09 % (w/v) sodium azide and 2 % sucrose.

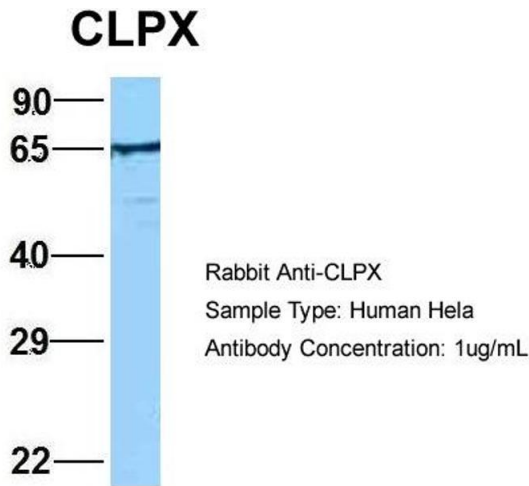
Preservative: Sodium azide

Precaution of Use: This product contains Sodium azide: a POISONOUS AND HAZARDOUS SUBSTANCE which should be handled by trained staff only.

Handling Advice: Avoid repeated freeze-thaw cycles.

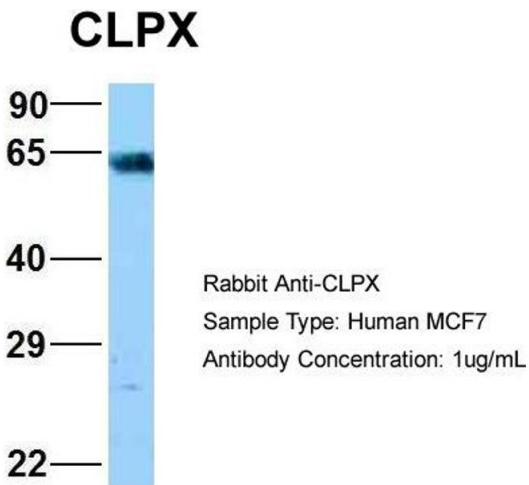
Storage: -20 °C

Storage Comment: For short term use, store at 2-8°C up to 1 week. For long term storage, store at -20°C in small aliquots to prevent freeze-thaw cycles.



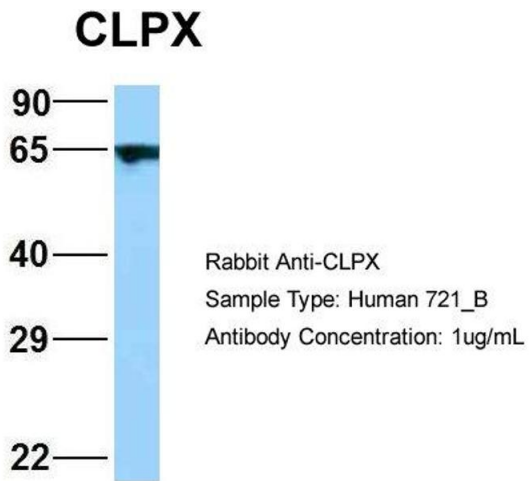
Western Blotting

Image 1. Host: Rabbit Target Name: EGFL8 Sample Type: HeLa Antibody Dilution: 1.0ug/ml CLPX is supported by BioGPS gene expression data to be expressed in HeLa



Western Blotting

Image 2. Host: Rabbit Target Name: NOP56 Sample Type: MCF7 Antibody Dilution: 1.0ug/ml CLPX is supported by BioGPS gene expression data to be expressed in MCF7



Western Blotting

Image 3. Host: Rabbit Target Name: WT1 Sample Type: 721_B Antibody Dilution: 1.0ug/ml CLPX is supported by BioGPS gene expression data to be expressed in 721_B

Please check the [product details page](#) for more images. Overall 4 images are available for ABIN2789497.