



[Go to Product page](#)

Datasheet for ABIN2789498

## anti-SOCS2 antibody (C-Term)

### 2 Images

#### Overview

Quantity:	100 µL
Target:	SOCS2
Binding Specificity:	C-Term
Reactivity:	Human, Rat, Mouse, Pig, Cow, Dog, Rabbit, Guinea Pig
Host:	Rabbit
Clonality:	Polyclonal
Conjugate:	This SOCS2 antibody is un-conjugated
Application:	Western Blotting (WB)

#### Product Details

Sequence:	KQFDSVVHLI DYYVQMCKDK RTGPEAPRNG TVHLYLTKPL YTSAPSLQHL
Predicted Reactivity:	Cow: 100%, Dog: 100%, Guinea Pig: 93%, Human: 100%, Mouse: 100%, Pig: 100%, Rabbit: 100%, Rat: 100%
Characteristics:	This is a rabbit polyclonal antibody against SOCS2. It was validated on Western Blot.
Purification:	Affinity Purified

#### Target Details

Target:	SOCS2
Alternative Name:	SOCS2 ( <a href="#">SOCS2 Products</a> )
Background:	This gene encodes a member of the STAT-induced STAT inhibitor (SSI), also known as

## Target Details

---

suppressor of cytokine signaling (SOCS), family. SSI family members are cytokine-inducible negative regulators of cytokine signaling. The expression of this gene can be induced by a subset of cytokines, including erythropoietin, GM-CSF, IL10 and interferon (IFN)-gamma. The protein encoded by this gene is found to interact with the cytoplasmic domain of insulin-like growth factor-1 receptor (IGF1R), and thus is thought to be involved in the regulation of IGF1R mediated cell signaling. Knockout studies in mice also suggested a regulatory role of this gene in IGF-1 related growth control.

Alias Symbols: CIS2, Cish2, SOCS-2, SSI-2, SSI2, STATI2

Protein Interaction Partner: Tceb1, CUL5, UBC, FLT3, ARFIP2, TPD52, PLA2G1B, BMI1, SOCS3, LCK, GHR, CCNC, RYBP, PTK2B, RNF7, TCEB2, EPOR, PTK2, PRLR, INSR, IGF1R, SOCS1,

Protein Size: 198

---

Molecular Weight: 22 kDa

---

Gene ID: 8835

---

NCBI Accession: [NM\\_003877](#), [NP\\_003868](#)

---

UniProt: [O14508](#)

---

Pathways: [JAK-STAT Signaling](#), [Response to Growth Hormone Stimulus](#)

## Application Details

---

Application Notes: Optimal working dilutions should be determined experimentally by the investigator.

---

Comment: Antigen size: 198 AA

---

Restrictions: For Research Use only

## Handling

---

Format: Liquid

---

Concentration: Lot specific

---

Buffer: Liquid. Purified antibody supplied in 1x PBS buffer with 0.09 % (w/v) sodium azide and 2 % sucrose.

---

Preservative: Sodium azide

---

Precaution of Use: This product contains Sodium azide: a POISONOUS AND HAZARDOUS SUBSTANCE which should be handled by trained staff only.

---

Handling Advice: Avoid repeated freeze-thaw cycles.

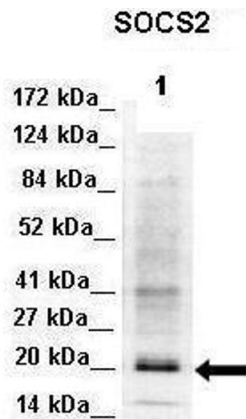
---

## Handling

Storage: -20 °C

Storage Comment: For short term use, store at 2-8°C up to 1 week. For long term storage, store at -20°C in small aliquots to prevent freeze-thaw cycles.

## Images



See Immunoblot 2 Data and Customer Feedback for more Information



### Western Blotting

**Image 1.** Lanes: Lane 1: 50ug Mouse adipose lysate Primary Antibody Dilution: 1:1000 Secondary Antibody: Donkey anti-Rabbit-HRP Secondary Antibody Dilution: 1:10000 Gene Name: SOCS2 Submitted by: Libin Liu, Boston University.

### Western Blotting

**Image 2.** WB Suggested Anti-SOCS2 Antibody Titration: 1.0 ug/ml Positive Control: U937 Whole Cell