

Datasheet for ABIN2789521
anti-IL15RA antibody (N-Term)



[Go to Product page](#)

1 Image

Overview

Quantity:	100 µL
Target:	IL15RA
Binding Specificity:	N-Term
Reactivity:	Human, Rat, Mouse, Cow, Dog, Guinea Pig, Horse, Rabbit
Host:	Rabbit
Clonality:	Polyclonal
Conjugate:	This IL15RA antibody is un-conjugated
Application:	Western Blotting (WB)

Product Details

Sequence:	NYSVNSRERY VCNSGFKRKA GTSTLIECVI NKNTNVAHWT TPSLKCIKIDP
Predicted Reactivity:	Cow: 100%, Dog: 100%, Guinea Pig: 100%, Horse: 100%, Human: 100%, Mouse: 92%, Rabbit: 100%, Rat: 100%
Characteristics:	This is a rabbit polyclonal antibody against IL15ra. It was validated on Western Blot.
Purification:	Affinity Purified

Target Details

Target:	IL15RA
Alternative Name:	IL15ra (IL15RA Products)
Background:	IL15ra is a high-affinity receptor for interleukin-15. Can signal both in cis and trans where IL15R

Target Details

from one subset of cells presents IL15 to neighboring IL2RG-expressing cells. Signal transduction seems to involve STAT3, STAT5, STAT6, JAK2 and SYK. Expression of different isoforms may alter or interfere with signal transduction.

Alias Symbols: AA690181

Protein Size: 263

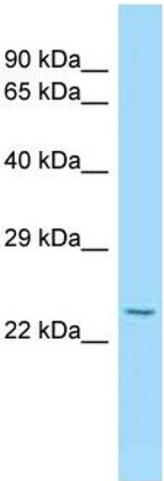
Molecular Weight:	25 kDa
Gene ID:	16169
NCBI Accession:	NM_008358 , NP_032384
UniProt:	Q60819
Pathways:	JAK-STAT Signaling

Application Details

Application Notes:	Optimal working dilutions should be determined experimentally by the investigator.
Comment:	Antigen size: 263 AA
Restrictions:	For Research Use only

Handling

Format:	Liquid
Concentration:	Lot specific
Buffer:	Liquid. Purified antibody supplied in 1x PBS buffer with 0.09 % (w/v) sodium azide and 2 % sucrose.
Preservative:	Sodium azide
Precaution of Use:	This product contains Sodium azide: a POISONOUS AND HAZARDOUS SUBSTANCE which should be handled by trained staff only.
Handling Advice:	Avoid repeated freeze-thaw cycles.
Storage:	-20 °C
Storage Comment:	For short term use, store at 2-8°C up to 1 week. For long term storage, store at -20°C in small aliquots to prevent freeze-thaw cycles.



Western Blotting

Image 1.