

Datasheet for ABIN2789530  
**anti-REG1 antibody (Middle Region)**[Go to Product page](#)

## 1 Image

## Overview

Quantity:	100 µL
Target:	REG1
Binding Specificity:	Middle Region
Reactivity:	Human, Mouse, Rabbit, Rat
Host:	Rabbit
Clonality:	Polyclonal
Conjugate:	This REG1 antibody is un-conjugated
Application:	Western Blotting (WB)

## Product Details

Sequence:	LHDPKRNRRW HWSSGSLFLY KSWATGSPNS SNRGYCVSLT SNTGYKKWKD
Predicted Reactivity:	Human: 100%, Mouse: 93%, Rabbit: 86%, Rat: 93%
Characteristics:	This is a rabbit polyclonal antibody against Reg1. It was validated on Western Blot.
Purification:	Affinity Purified

## Target Details

Target:	REG1
Alternative Name:	Reg1 ( <a href="#">REG1 Products</a> )
Background:	The function of this protein remains unknown. Alias Symbols: -

## Target Details

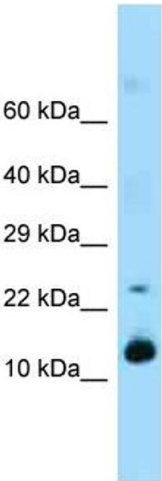
	Protein Interaction Partner: Ubc, Irak1, Ikbkb, Btrc, Rfwd2, Protein Size: 165
Molecular Weight:	18 kDa
Gene ID:	19692
NCBI Accession:	<a href="#">NM_009042</a> , <a href="#">NP_033068</a>
UniProt:	<a href="#">Q3TV26</a>

## Application Details

Application Notes:	Optimal working dilutions should be determined experimentally by the investigator.
Comment:	Antigen size: 165 AA
Restrictions:	For Research Use only

## Handling

Format:	Liquid
Concentration:	Lot specific
Buffer:	Liquid. Purified antibody supplied in 1x PBS buffer with 0.09 % (w/v) sodium azide and 2 % sucrose.
Preservative:	Sodium azide
Precaution of Use:	This product contains Sodium azide: a POISONOUS AND HAZARDOUS SUBSTANCE which should be handled by trained staff only.
Handling Advice:	Avoid repeated freeze-thaw cycles.
Storage:	-20 °C
Storage Comment:	For short term use, store at 2-8°C up to 1 week. For long term storage, store at -20°C in small aliquots to prevent freeze-thaw cycles.



Western Blotting

Image 1.