

Datasheet for ABIN2789534
anti-SPRR1A antibody (Middle Region)



[Go to Product page](#)

2 Images

Overview

Quantity:	100 µL
Target:	SPRR1A
Binding Specificity:	Middle Region
Reactivity:	Human, Rat, Cow, Horse, Mouse, Pig, Rabbit
Host:	Rabbit
Clonality:	Polyclonal
Conjugate:	This SPRR1A antibody is un-conjugated
Application:	Western Blotting (WB)

Product Details

Sequence:	PCHPKVPEPC HPKVPEPCQP KVPEPCQPKV PEPCPSTVTP APAQQKTKQK
Predicted Reactivity:	Cow: 85%, Horse: 100%, Human: 100%, Mouse: 86%, Pig: 92%, Rabbit: 93%, Rat: 86%
Characteristics:	This is a rabbit polyclonal antibody against SPRR1A. It was validated on Western Blot.
Purification:	Affinity Purified

Target Details

Target:	SPRR1A
Alternative Name:	SPRR1A (SPRR1A Products)
Background:	SPRR1A is a cross-linked envelope protein of keratinocytes. It is a keratinocyte protein that first appears in the cell cytosol, but ultimately becomes cross-linked to membrane proteins by

Target Details

transglutaminase. All that results in the formation of an insoluble envelope beneath the plasma membrane.

Alias Symbols: SPRK

Protein Interaction Partner: RNF2, ELAVL1, ACTA1,

Protein Size: 89

Molecular Weight: 10 kDa

Gene ID: 6698

NCBI Accession: [NM_005987](#), [NP_005978](#)

UniProt: [P35321](#)

Application Details

Application Notes: Optimal working dilutions should be determined experimentally by the investigator.

Comment: Antigen size: 89 AA

Restrictions: For Research Use only

Handling

Format: Liquid

Concentration: Lot specific

Buffer: Liquid. Purified antibody supplied in 1x PBS buffer with 0.09 % (w/v) sodium azide and 2 % sucrose.

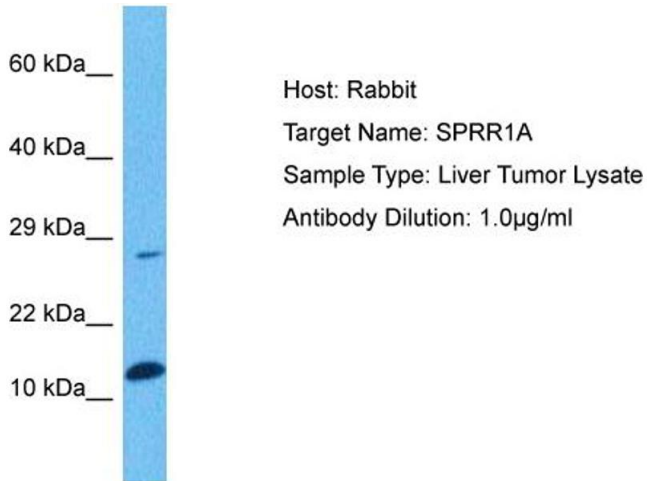
Preservative: Sodium azide

Precaution of Use: This product contains Sodium azide: a POISONOUS AND HAZARDOUS SUBSTANCE which should be handled by trained staff only.

Handling Advice: Avoid repeated freeze-thaw cycles.

Storage: -20 °C

Storage Comment: For short term use, store at 2-8°C up to 1 week. For long term storage, store at -20°C in small aliquots to prevent freeze-thaw cycles.



Western Blotting

Image 1. Host: Rabbit Target Name: SPRR1A Sample Tissue: Human Liver Tumor Antibody Dilution: 1ug/ml



Western Blotting

Image 2. WB Suggested Anti-SPRR1A Antibody Titration: 1.0 ug/ml Positive Control: HT1080 Whole Cell