



[Go to Product page](#)

Datasheet for ABIN2789544

anti-SPRR1B antibody (Middle Region)

1 Image

Overview

Quantity:	100 µL
Target:	SPRR1B
Binding Specificity:	Middle Region
Reactivity:	Human, Cow, Horse, Mouse, Pig, Rabbit, Rat
Host:	Rabbit
Clonality:	Polyclonal
Conjugate:	This SPRR1B antibody is un-conjugated
Application:	Immunohistochemistry (IHC), Western Blotting (WB)

Product Details

Sequence:	PCHPKVPEPC HPKVPEPCQP KVPEPCHPKV PEPCPSIVTP APAQQKTKQK
Predicted Reactivity:	Cow: 85%, Horse: 100%, Human: 100%, Mouse: 85%, Pig: 92%, Rabbit: 92%, Rat: 85%
Characteristics:	This is a rabbit polyclonal antibody against SPRR1B. It was validated on Western Blot.
Purification:	Affinity Purified

Target Details

Target:	SPRR1B
Alternative Name:	SPRR1B (SPRR1B Products)
Background:	SPRR1B is a cross-linked envelope protein of keratinocytes. It is a keratinocyte protein that first appears in the cell cytosol, but ultimately becomes cross-linked to membrane proteins by

Target Details

transglutaminase. All that results in the formation of an insoluble envelope beneath the plasma membrane. SPRR1B can function as both amine donor and acceptor in transglutaminase-mediated cross-linkage.

Alias Symbols: CORNIFIN, GADD33, MGC61901, SPRR1

Protein Interaction Partner: Rab5c,

Protein Size: 89

Molecular Weight: 10 kDa

Gene ID: 6699

NCBI Accession: [NM_003125](#), [NP_003116](#)

UniProt: [P22528](#)

Application Details

Application Notes: Optimal working dilutions should be determined experimentally by the investigator.

Comment: Antigen size: 89 AA

Restrictions: For Research Use only

Handling

Format: Liquid

Concentration: Lot specific

Buffer: Liquid. Purified antibody supplied in 1x PBS buffer with 0.09 % (w/v) sodium azide and 2 % sucrose.

Preservative: Sodium azide

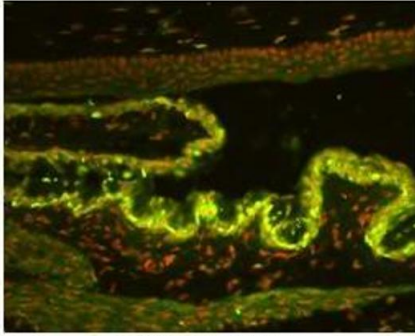
Precaution of Use: This product contains Sodium azide: a POISONOUS AND HAZARDOUS SUBSTANCE which should be handled by trained staff only.

Handling Advice: Avoid repeated freeze-thaw cycles.

Storage: -20 °C

Storage Comment: For short term use, store at 2-8°C up to 1 week. For long term storage, store at -20°C in small aliquots to prevent freeze-thaw cycles.

SPRR1b



Green: SPRR1b
Red: Nucleus

See IHC 1 Data and customer Feedback for more Information

Immunohistochemistry

Image 1.