



[Go to Product page](#)

Datasheet for ABIN2789549

anti-RPS2 antibody (Middle Region)

1 Image

1 Publication

Overview

Quantity:	100 µL
Target:	RPS2
Binding Specificity:	Middle Region
Reactivity:	Rat, Dog, Zebrafish (Danio rerio), Saccharomyces cerevisiae, Pig
Host:	Rabbit
Clonality:	Polyclonal
Conjugate:	This RPS2 antibody is un-conjugated
Application:	Western Blotting (WB)

Product Details

Sequence:	GASLKDEVLK IMPVQKQTRA GQRTRFKAFV AIGDYNGHVG LGVKCSKEVA
Predicted Reactivity:	Dog: 100%, Pig: 100%, Rat: 100%, Yeast: 100%, Zebrafish: 100%
Characteristics:	This is a rabbit polyclonal antibody against RPS2. It was validated on Western Blot.
Purification:	Affinity Purified

Target Details

Target:	RPS2
Alternative Name:	RPS2 (RPS2 Products)
Background:	Ribosomes, the organelles that catalyze protein synthesis, consist of a small 40S subunit and a large 60S subunit. Together these subunits are composed of 4 RNA species and approximately

Target Details

80 structurally distinct proteins. This gene encodes a ribosomal protein that is a component of the 40S subunit. The protein belongs to the S5P family of ribosomal proteins. It is located in the cytoplasm. This gene shares sequence similarity with mouse LLRep3. It is co-transcribed with the small nucleolar RNA gene U64, which is located in its third intron. As is typical for genes encoding ribosomal proteins, there are multiple processed pseudogenes of this gene dispersed through the genome.

Alias Symbols: LLREP3, MGC102851, MGC117344, MGC117345, S2

Protein Interaction Partner: UBC, TP53, CEP250, TUBGCP3, TUBG1, NEDD1, STAU1, MDM2, RNF2, rev, RPS29, RPS28, RPS26, RPS25, RPS24, RPS23, RPS21, RPS20, RPS19, RPS18, RPS16, RPS15A, DYNLL1, EIF3CL, WIBG, TSR1, SND1, RPS15, RPS14, RPS13, RPS12, RPS11, RPS10, RPS9, RPS8, RPS7, RPS6, RPS5

Protein Size: 293

Molecular Weight: 32 kDa

Gene ID: 6187

NCBI Accession: [NM_002952](#), [NP_002943](#)

UniProt: [P15880](#)

Pathways: [Ribonucleoprotein Complex Subunit Organization](#), [Ribosome Assembly](#)

Application Details

Application Notes: Optimal working dilutions should be determined experimentally by the investigator.

Comment: Antigen size: 293 AA

Restrictions: For Research Use only

Handling

Format: Liquid

Concentration: Lot specific

Buffer: Liquid. Purified antibody supplied in 1x PBS buffer with 0.09 % (w/v) sodium azide and 2 % sucrose.

Preservative: Sodium azide

Precaution of Use: This product contains Sodium azide: a POISONOUS AND HAZARDOUS SUBSTANCE which should be handled by trained staff only.

Handling

Handling Advice: Avoid repeated freeze-thaw cycles.

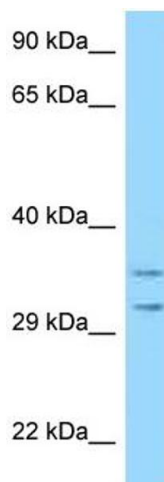
Storage: -20 °C

Storage Comment: For short term use, store at 2-8°C up to 1 week. For long term storage, store at -20°C in small aliquots to prevent freeze-thaw cycles.

Publications

Product cited in: Begay, Tharp, Martin, Graw, Sinagra, Miani, Sweet, Slavov, Stafford, Zeller, Alnefaie, Rowland, Brun, Jones, Gowan, Mestroni, Garrity, Taylor: "FLNC Gene Splice Mutations Cause Dilated Cardiomyopathy." in: **JACC. Basic to translational science**, Vol. 1, Issue 5, pp. 344-359, (2016) ([PubMed](#)).

Images



Western Blotting

Image 1. WB Suggested Anti-RPS2 Antibody Titration: 1.0 ug/ml Positive Control: HeLa Whole Cell RPS2 is strongly supported by BioGPS gene expression data to be expressed in Human HeLa cells