



[Go to Product page](#)

Datasheet for ABIN2789554

anti-PDE6B antibody (N-Term)

1 Image

Overview

Quantity:	100 µL
Target:	PDE6B
Binding Specificity:	N-Term
Reactivity:	Human, Mouse, Rat, Cow, Dog, Horse, Guinea Pig, Rabbit, Zebrafish (Danio rerio)
Host:	Rabbit
Clonality:	Polyclonal
Conjugate:	This PDE6B antibody is un-conjugated
Application:	Western Blotting (WB)

Product Details

Sequence:	LSMPIV NKKE EIVGVATFYN RKD GKPFDEQ DEVLME SLTQ FLGWSVMNTD
Predicted Reactivity:	Cow: 100%, Dog: 100%, Guinea Pig: 100%, Horse: 100%, Human: 100%, Mouse: 93%, Rabbit: 100%, Rat: 100%, Zebrafish: 93%
Characteristics:	This is a rabbit polyclonal antibody against PDE6B. It was validated on Western Blot.
Purification:	Affinity Purified

Target Details

Target:	PDE6B
Alternative Name:	PDE6B (PDE6B Products)
Background:	Photon absorption triggers a signaling cascade in rod photoreceptors that activates cGMP

Target Details

phosphodiesterase (PDE), resulting in the rapid hydrolysis of cGMP, closure of cGMP-gated cation channels, and hyperpolarization of the cell. PDE is a peripheral membrane heterotrimeric enzyme made up of alpha, beta, and gamma subunits. This gene encodes the beta subunit. Mutations in this gene result in retinitis pigmentosa and autosomal dominant congenital stationary night blindness. Multiple transcript variants encoding different isoforms have been found for this gene.

Alias Symbols: CSNB3, CSNBAD2, PDEB, RP40, rd1

Protein Interaction Partner: PPP1CC,

Protein Size: 575

Molecular Weight: 63 kDa

Gene ID: 5158

NCBI Accession: [NM_001145292](#), [NP_001138764](#)

UniProt: [E7ETT3](#)

Pathways: [Regulation of G-Protein Coupled Receptor Protein Signaling](#), [Phototransduction](#)

Application Details

Application Notes: Optimal working dilutions should be determined experimentally by the investigator.

Comment: Antigen size: 575 AA

Restrictions: For Research Use only

Handling

Format: Liquid

Concentration: Lot specific

Buffer: Liquid. Purified antibody supplied in 1x PBS buffer with 0.09 % (w/v) sodium azide and 2 % sucrose.

Preservative: Sodium azide

Precaution of Use: This product contains Sodium azide: a POISONOUS AND HAZARDOUS SUBSTANCE which should be handled by trained staff only.

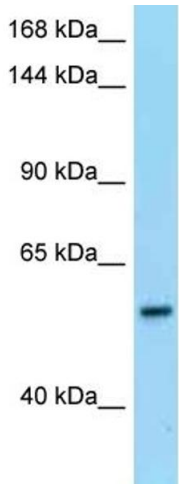
Handling Advice: Avoid repeated freeze-thaw cycles.

Storage: -20 °C

Handling

Storage Comment: For short term use, store at 2-8°C up to 1 week. For long term storage, store at -20°C in small aliquots to prevent freeze-thaw cycles.

Images



Rabbit Anti-PDE6B Antibody
Catalog Number: ARP63581
Lot Number: QC33913
Lane: Placenta Lysate

Antibody Titration: 1.0µg/ml
Gel Concentration: 6-18%

Western Blotting

Image 1.