

Datasheet for ABIN2789607
anti-RAB11A antibody (C-Term)[Go to Product page](#)

2 Images

1 Publication

Overview

Quantity:	100 µL
Target:	RAB11A
Binding Specificity:	C-Term
Reactivity:	Human, Mouse, Rat, Cow, Horse, Rabbit, Dog, Guinea Pig, Sheep, Zebrafish (Danio rerio)
Host:	Rabbit
Clonality:	Polyclonal
Conjugate:	This RAB11A antibody is un-conjugated
Application:	Western Blotting (WB), Immunohistochemistry (IHC)

Product Details

Sequence:	NVEAAFQIL TEIYRIVSQK QMSDRRENDM SPSNNVPIH VPPTTENKPK
Predicted Reactivity:	Cow: 100%, Dog: 100%, Guinea Pig: 100%, Horse: 100%, Human: 100%, Mouse: 100%, Rabbit: 100%, Rat: 100%, Sheep: 100%, Zebrafish: 93%
Characteristics:	This is a rabbit polyclonal antibody against RAB11A. It was validated on Western Blot.
Purification:	Affinity Purified

Target Details

Target:	RAB11A
Alternative Name:	RAB11A (RAB11A Products)
Background:	The protein encoded by this gene belongs to the Rab family of the small GTPase superfamily. It

Target Details

is associated with both constitutive and regulated secretory pathways, and may be involved in protein transport. Two transcript variants encoding different isoforms have been found for this gene.

Alias Symbols: MGC1490, YL8

Protein Interaction Partner: OPTN, MDM2, TBXA2R, PTGIR, Myo5b, RAB11FIP2, ATP4A, KCNH2, TDP2, RCHY1, YWHAG, UBC, FN1, ATF2, RAB1B, UQCR10, RAB11B, RAB7A, RAB1A, MYH10, MYH9, ILF3, HSPA5, HSPA1L, CACNA2D1, CYSTM1, RAB11FIP5, RAB11FIP3, GRIA2, GRIA1, RAB11FIP4, TYRP1, RAB5A, CHMP1B, CH

Protein Size: 216

Molecular Weight:	24 kDa
Gene ID:	8766
NCBI Accession:	NM_004663 , NP_004654
UniProt:	P62491
Pathways:	Regulation of Cell Size , Thromboxane A2 Receptor Signaling , Regulation of long-term Neuronal Synaptic Plasticity

Application Details

Application Notes:	Optimal working dilutions should be determined experimentally by the investigator.
Comment:	Antigen size: 216 AA
Restrictions:	For Research Use only

Handling

Format:	Liquid
Concentration:	Lot specific
Buffer:	Liquid. Purified antibody supplied in 1x PBS buffer with 0.09 % (w/v) sodium azide and 2 % sucrose.
Preservative:	Sodium azide
Precaution of Use:	This product contains Sodium azide: a POISONOUS AND HAZARDOUS SUBSTANCE which should be handled by trained staff only.
Handling Advice:	Avoid repeated freeze-thaw cycles.

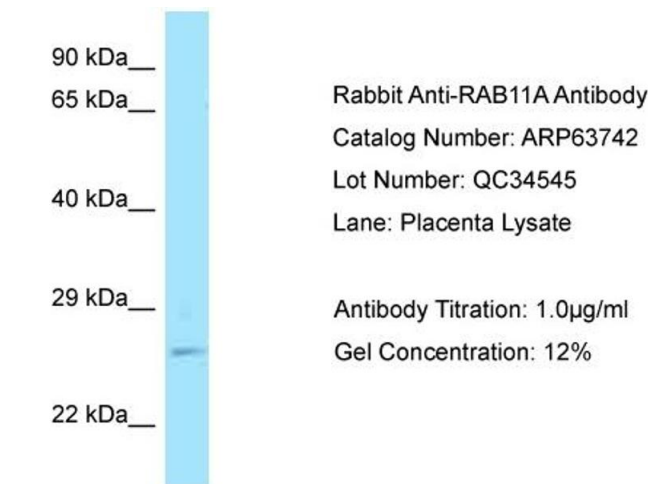
Handling

Storage:	-20 °C
Storage Comment:	For short term use, store at 2-8°C up to 1 week. For long term storage, store at -20°C in small aliquots to prevent freeze-thaw cycles.

Publications

Product cited in:	Santoro, Mori, Marani, Grasso, Cambria, Blandino, Muti, Strano: "Blockage of melatonin receptors impairs p53-mediated prevention of DNA damage accumulation." in: Carcinogenesis , Vol. 34, Issue 5, pp. 1051-61, (2013) (PubMed).
-------------------	---

Images



Western Blotting

Image 1.

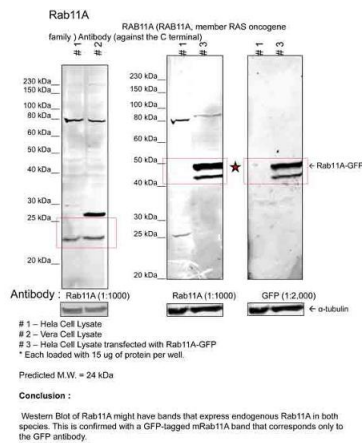


Image submitted by Dr. Jakob Szwedo from Dr. Lupashin's lab at The University of Arkansas

Western Blotting

Image 2. Sample Type: 1. Human Cervical Cancer Cell Lysate (15ug)
2. Monkey Fibroblast Cell Lysate (15ug)
3. Human Cervical Cancer Cell transfected with mouse Rab11A-GFP (15ug)

Primary Dilution: 1:1000

Secondary Antibody: goat anti-Rabbit

Secondary Dilution: 1:40,000

Image Submitted by: Dr. Jakob Szwedo, Dr. Lupashin's Lab
University of Arkansas for Medical Sciences.