

Datasheet for ABIN2789631
anti-KCP antibody (N-Term)[Go to Product page](#)

1 Image

Overview

Quantity:	100 µL
Target:	KCP
Binding Specificity:	N-Term
Reactivity:	Human, Rat, Cow, Dog, Guinea Pig, Rabbit
Host:	Rabbit
Clonality:	Polyclonal
Conjugate:	This KCP antibody is un-conjugated
Application:	Western Blotting (WB)

Product Details

Sequence:	AHSSVLAGNS QEQWHPLREW LGRLEAAVME LREQNKDLQT RVRQLESCEC
Predicted Reactivity:	Cow: 92%, Dog: 82%, Guinea Pig: 85%, Human: 100%, Rabbit: 85%, Rat: 85%
Characteristics:	This is a rabbit polyclonal antibody against KCP. It was validated on Western Blot.
Purification:	Affinity Purified

Target Details

Target:	KCP
Alternative Name:	KCP (KCP Products)
Background:	The function of this protein remains unknown. Alias Symbols: CRIM2, KCP1, NET67

Target Details

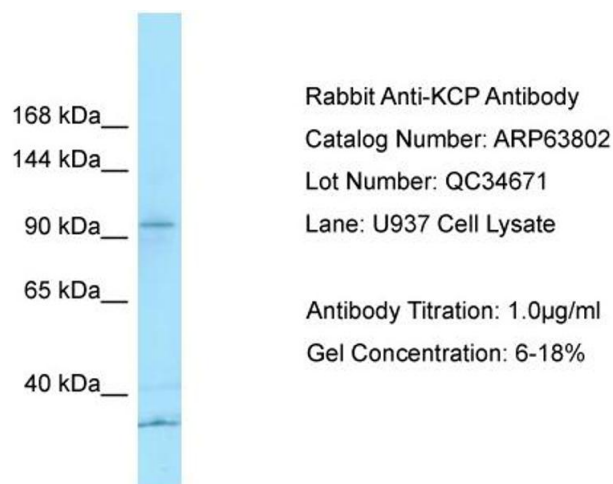
	Protein Size: 1503
Molecular Weight:	160 kDa
Gene ID:	375616
NCBI Accession:	NM_199349 , NP_955381
UniProt:	Q6ZWJ8

Application Details

Application Notes:	Optimal working dilutions should be determined experimentally by the investigator.
Comment:	Antigen size: 814 AA
Restrictions:	For Research Use only

Handling

Format:	Liquid
Concentration:	Lot specific
Buffer:	Liquid. Purified antibody supplied in 1x PBS buffer with 0.09 % (w/v) sodium azide and 2 % sucrose.
Preservative:	Sodium azide
Precaution of Use:	This product contains Sodium azide: a POISONOUS AND HAZARDOUS SUBSTANCE which should be handled by trained staff only.
Handling Advice:	Avoid repeated freeze-thaw cycles.
Storage:	-20 °C
Storage Comment:	For short term use, store at 2-8°C up to 1 week. For long term storage, store at -20°C in small aliquots to prevent freeze-thaw cycles.



Western Blotting

Image 1.