

Datasheet for ABIN2789651
anti-MASP1 antibody (N-Term)



[Go to Product page](#)

1 Image

Overview

Quantity:	100 µL
Target:	MASP1
Binding Specificity:	N-Term
Reactivity:	Human, Mouse, Rat, Rabbit, Guinea Pig, Cow, Dog, Horse
Host:	Rabbit
Clonality:	Polyclonal
Conjugate:	This MASP1 antibody is un-conjugated
Application:	Western Blotting (WB)

Product Details

Immunogen:	The immunogen is a synthetic peptide directed towards the N-terminal region of Human MASP1
Sequence:	PGSFMSITFR SDFSNEERFT GFDAHYMAVD VDECKEREDE ELSCDHYCHN
Predicted Reactivity:	Cow: 93%, Dog: 93%, Guinea Pig: 100%, Horse: 93%, Human: 100%, Mouse: 100%, Rabbit: 100%, Rat: 100%
Characteristics:	This is a rabbit polyclonal antibody against MASP1. It was validated on Western Blot.
Purification:	Affinity Purified

Target Details

Target:	MASP1
---------	-------

Target Details

Alternative Name:	MASP1 (MASP1 Products)
Background:	<p>This gene encodes a serine protease that functions as a component of the lectin pathway of complement activation. The complement pathway plays an essential role in the innate and adaptive immune response. The encoded protein is synthesized as a zymogen and is activated when it complexes with the pathogen recognition molecules of lectin pathway, the mannose-binding lectin and the ficolins. This protein is not directly involved in complement activation but may play a role as an amplifier of complement activation by cleaving complement C2 or by activating another complement serine protease, MASP-2. The encoded protein is also able to cleave fibrinogen and factor XIII and may be involved in coagulation. A splice variant of this gene which lacks the serine protease domain functions as an inhibitor of the complement pathway.</p> <p>Alias Symbols: CRARF, CRARF1, DKFZp686I01199, FLJ26383, MASP, MGC126283, MGC126284, PRSS5, RaRF</p> <p>Protein Interaction Partner: CDK19, CUL3, PDCD6IP, RPS6KA6, MAPK8IP2, NUDT21, NCK2, UFD1L, RPS6KA3, MAPK6, H2AFX, GSK3B, GADD45A, C2, SERPING1, FCN2, MBL2, C3, MASP2,</p> <p>Protein Size: 699</p>
Molecular Weight:	28 kDa
Gene ID:	5648
NCBI Accession:	NM_001879 , NP_001870
UniProt:	P48740
Pathways:	Complement System

Application Details

Application Notes:	Optimal working dilutions should be determined experimentally by the investigator.
Comment:	Antigen size: 699 AA
Restrictions:	For Research Use only

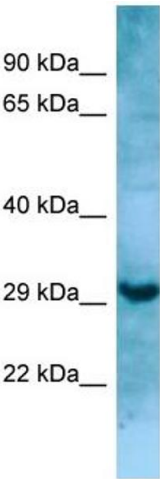
Handling

Format:	Liquid
Concentration:	Lot specific
Buffer:	Liquid. Purified antibody supplied in 1x PBS buffer with 0.09 % (w/v) sodium azide and 2 %

Handling

	sucrose.
Preservative:	Sodium azide
Precaution of Use:	This product contains Sodium azide: a POISONOUS AND HAZARDOUS SUBSTANCE which should be handled by trained staff only.
Handling Advice:	Avoid repeated freeze-thaw cycles.
Storage:	-20 °C
Storage Comment:	For short term use, store at 2-8°C up to 1 week. For long term storage, store at -20°C in small aliquots to prevent freeze-thaw cycles.

Images



Western Blotting

Image 1. WB Suggested Anti-MASP1 Antibody Titration: 1.0 ug/ml Positive Control: HT1080 Whole Cell