

Datasheet for ABIN2789740  
**anti-PCLO antibody (C-Term)**[Go to Product page](#)

## 1 Image

## Overview

Quantity:	100 µL
Target:	PCLO
Binding Specificity:	C-Term
Reactivity:	Human, Mouse, Rat, Pig, Rabbit, Zebrafish (Danio rerio), Cow, Guinea Pig, Horse
Host:	Rabbit
Clonality:	Polyclonal
Conjugate:	This PCLO antibody is un-conjugated
Application:	Western Blotting (WB)

## Product Details

Immunogen:	The immunogen is a synthetic peptide directed towards the C-terminal region of Human PCLO
Sequence:	SHGIFPDPSK DMQVPTIEKS HSSPGSSKSS SEGHLRSHGP SRSQSKTSVT
Predicted Reactivity:	Cow: 100%, Guinea Pig: 86%, Horse: 100%, Human: 100%, Mouse: 100%, Pig: 100%, Rabbit: 100%, Rat: 100%, Zebrafish: 93%
Characteristics:	This is a rabbit polyclonal antibody against PCLO. It was validated on Western Blot.
Purification:	Affinity Purified

## Target Details

Target:	PCLO
Alternative Name:	PCLO ( <a href="#">PCLO Products</a> )

## Target Details

Background: The protein encoded by this gene is part of the presynaptic cytoskeletal matrix, which is involved in establishing active synaptic zones and in synaptic vesicle trafficking. Variations in this gene have been associated with bipolar disorder and major depressive disorder. Two transcript variants encoding different isoforms have been found for this gene.

Protein Interaction Partner: UBC, CEP72, Dlg4, ERC2, GIT1, GIT2,

Protein Size: 356

Molecular Weight: 39 kDa

Gene ID: 27445

Pathways: [Hormone Transport](#), [Synaptic Vesicle Exocytosis](#)

## Application Details

Application Notes: Optimal working dilution should be determined by the investigator.

Restrictions: For Research Use only

## Handling

Format: Liquid

Concentration: 1 mg/mL

Buffer: Liquid. Purified antibody supplied in 1x PBS buffer with 0.09 % (w/v) sodium azide and 2 % sucrose.

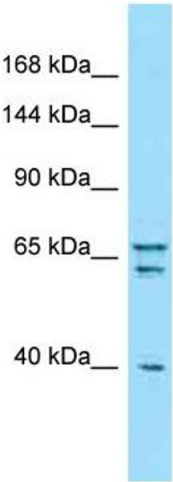
Preservative: Sodium azide

Precaution of Use: This product contains Sodium azide: a POISONOUS AND HAZARDOUS SUBSTANCE which should be handled by trained staff only.

Handling Advice: Avoid repeat freeze-thaw cycles.

Storage: -20 °C

Storage Comment: For short term use, store at 2-8°C up to 1 week. For long term storage, store at -20°C in small aliquots to prevent freeze-thaw cycles.



**Western Blotting**

**Image 1.**