

Datasheet for ABIN2789747  
**anti-RILP antibody (C-Term)**



[Go to Product page](#)

1 Image

## Overview

Quantity:	100 µL
Target:	RILP
Binding Specificity:	C-Term
Reactivity:	Human
Host:	Rabbit
Clonality:	Polyclonal
Conjugate:	This RILP antibody is un-conjugated
Application:	Western Blotting (WB)

## Product Details

Sequence:	PPPPESKIQS FFGLWYRGKA ESSEDETSSP APSKLGEEEE AQPQSPAPDP
Predicted Reactivity:	Human: 100%
Characteristics:	This is a rabbit polyclonal antibody against RILP. It was validated on Western Blot.
Purification:	Affinity Purified

## Target Details

Target:	RILP
Alternative Name:	RILP ( <a href="#">RILP Products</a> )
Background:	This gene encodes a lysosomal protein that interacts with RAB7, a small GTPase that controls transport to endocytic degradative compartments. Studies using mutant forms of the two

## Target Details

---

proteins suggest that this protein represents a downstream effector for RAB7, and both proteins act together in the regulation of late endocytic traffic. A unique region of this protein has also been shown to be involved in the regulation of lysosomal morphology.

Alias Symbols: FLJ31193, PP10141

Protein Interaction Partner: LDB2, RCHY1, KPNA2, RAB7B, VPS36, SNF8, RAB7A, RILP, RAB34,

Protein Size: 401

---

Molecular Weight: 44 kDa

---

Gene ID: 83547

---

NCBI Accession: [NM\\_031430](#), [NP\\_113618](#)

---

UniProt: [Q96NA2](#)

## Application Details

---

Application Notes: Optimal working dilutions should be determined experimentally by the investigator.

---

Comment: Antigen size: 401 AA

---

Restrictions: For Research Use only

## Handling

---

Format: Liquid

---

Concentration: Lot specific

---

Buffer: Liquid. Purified antibody supplied in 1x PBS buffer with 0.09 % (w/v) sodium azide and 2 % sucrose.

---

Preservative: Sodium azide

---

Precaution of Use: This product contains Sodium azide: a POISONOUS AND HAZARDOUS SUBSTANCE which should be handled by trained staff only.

---

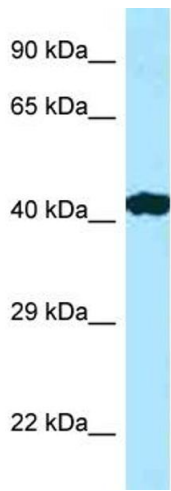
Handling Advice: Avoid repeated freeze-thaw cycles.

---

Storage: -20 °C

---

Storage Comment: For short term use, store at 2-8°C up to 1 week. For long term storage, store at -20°C in small aliquots to prevent freeze-thaw cycles.



Rabbit Anti-RILP Antibody  
Catalog Number: ARP64148  
Lot Number: QC34848  
Lane: Placenta Lysate

Antibody Titration: 1.0µg/ml  
Gel Concentration: 12%

### Western Blotting

Image 1.