

Datasheet for ABIN2789759
anti-GPR4 antibody (Middle Region)



[Go to Product page](#)

1 Image

Overview

Quantity:	100 µL
Target:	GPR4
Binding Specificity:	Middle Region
Reactivity:	Human, Rat, Mouse, Pig, Dog, Cow, Zebrafish (Danio rerio)
Host:	Rabbit
Clonality:	Polyclonal
Conjugate:	This GPR4 antibody is un-conjugated
Application:	Western Blotting (WB)

Product Details

Immunogen:	The immunogen is a synthetic peptide directed towards the middle region of Mouse Gpr4
Sequence:	LCYRGILRAV QSSVSTERQE KVKIKRLALS LIAIVLVCFA PYHALLLSRS
Predicted Reactivity:	Cow: 93%, Dog: 100%, Human: 100%, Mouse: 92%, Pig: 100%, Rat: 93%, Zebrafish: 93%
Characteristics:	This is a rabbit polyclonal antibody against Gpr4. It was validated on Western Blot.
Purification:	Affinity Purified

Target Details

Target:	GPR4
Alternative Name:	Gpr4 (GPR4 Products)
Background:	Gpr4 is a proton-sensing receptor coupled to several G-proteins, including G(s), G(13) and

Target Details

G(q)/G(11) proteins, leading to cAMP production.

Alias Symbols: -

Protein Size: 365

Molecular Weight: 41 kDa

Gene ID: 319197

NCBI Accession: [NM_175668](#), [NP_783599](#)

UniProt: [Q8BUD0](#)

Application Details

Restrictions: For Research Use only

Handling

Format: Liquid

Concentration: 1 mg/mL

Buffer: Liquid. Purified antibody supplied in 1x PBS buffer with 0.09 % (w/v) sodium azide and 2 % sucrose.

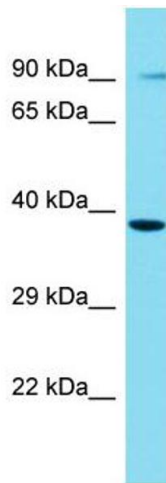
Preservative: Sodium azide

Precaution of Use: This product contains Sodium azide: a POISONOUS AND HAZARDOUS SUBSTANCE which should be handled by trained staff only.

Handling Advice: Avoid repeat freeze-thaw cycles.

Storage: -20 °C

Storage Comment: For short term use, store at 2-8°C up to 1 week. For long term storage, store at -20°C in small aliquots to prevent freeze-thaw cycles.



Western Blotting

Image 1.