

Datasheet for ABIN2789760  
**anti-MARCKSL1 antibody (C-Term)**[Go to Product page](#)

## 2 Images

## Overview

Quantity:	100 µL
Target:	MARCKSL1
Binding Specificity:	C-Term
Reactivity:	Human, Mouse, Rat, Rabbit, Cow, Dog, Horse, Pig
Host:	Rabbit
Clonality:	Polyclonal
Conjugate:	This MARCKSL1 antibody is un-conjugated
Application:	Western Blotting (WB)

## Product Details

Sequence:	AATPESQEPQ AKGAEASAAS EEEAGPQATE PSTPSGPESG PTPASAEQNE
Predicted Reactivity:	Cow: 79%, Dog: 86%, Horse: 86%, Human: 100%, Mouse: 100%, Pig: 93%, Rabbit: 93%, Rat: 79%
Characteristics:	This is a rabbit polyclonal antibody against MARCKSL1. It was validated on Western Blot.
Purification:	Affinity Purified

## Target Details

Target:	MARCKSL1
Alternative Name:	MARCKSL1 ( <a href="#">MARCKSL1 Products</a> )
Background:	MARCKSL1 may be involved in coupling the protein kinase C and calmodulin signal transduction systems.

## Target Details

Alias Symbols: F52, MACMARCKS, MLP, MLP1, MRP

Protein Interaction Partner: UBC, MAPK14, PARK2, PAN2, CFTR, MRPL45, RNMTL1, MRPL16, MRPL30, MRPL22, MRPL46, ZBTB43, RALB, RALA, PTPN1, PCDH7, NDUFB5, ATP6V0A1, ATP6V1A, CDK2, ELAVL1, DCTN2,

Protein Size: 195

Molecular Weight: 19 kDa

Gene ID: 65108

NCBI Accession: [NM\\_023009](#), [NP\\_075385](#)

UniProt: [P49006](#)

## Application Details

Application Notes: Optimal working dilutions should be determined experimentally by the investigator.

Comment: Antigen size: 195 AA

Restrictions: For Research Use only

## Handling

Format: Liquid

Concentration: Lot specific

Buffer: Liquid. Purified antibody supplied in 1x PBS buffer with 0.09 % (w/v) sodium azide and 2 % sucrose.

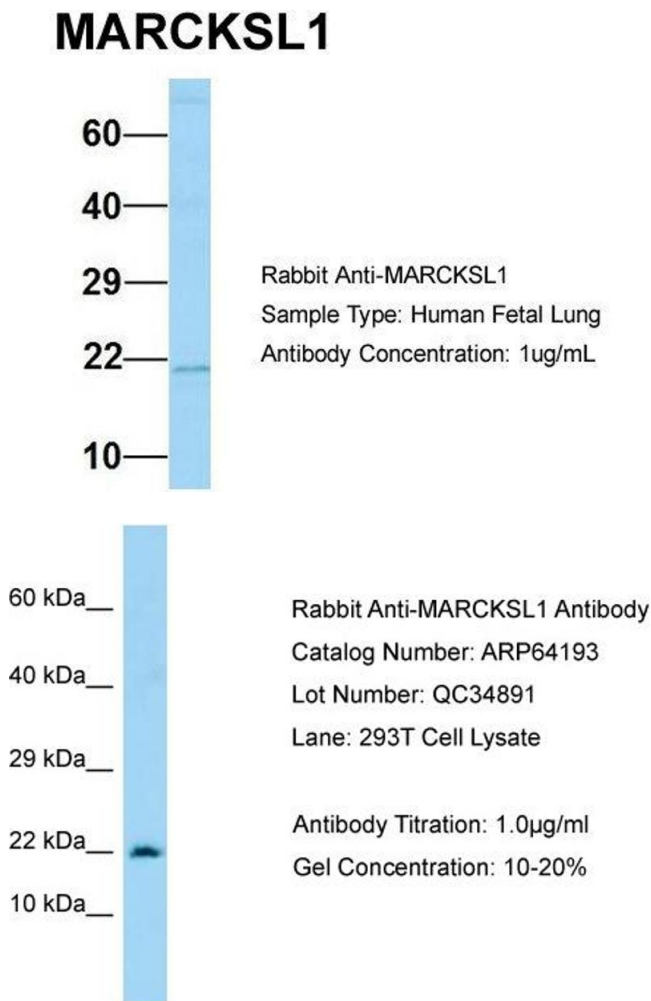
Preservative: Sodium azide

Precaution of Use: This product contains Sodium azide: a POISONOUS AND HAZARDOUS SUBSTANCE which should be handled by trained staff only.

Handling Advice: Avoid repeated freeze-thaw cycles.

Storage: -20 °C

Storage Comment: For short term use, store at 2-8°C up to 1 week. For long term storage, store at -20°C in small aliquots to prevent freeze-thaw cycles.



## Western Blotting

**Image 1.** Host: Rabbit  
Target Name: MARCKSL1  
Sample Tissue: Human Fetal Lung  
Antibody Dilution: 1.0 µg/mL

## Western Blotting

**Image 2.**