



[Go to Product page](#)

Datasheet for ABIN2789778
anti-PCTP antibody (Middle Region)

1 Image

Overview

Quantity:	100 µL
Target:	PCTP
Binding Specificity:	Middle Region
Reactivity:	Human, Mouse, Rat, Dog, Rabbit, Cow, Guinea Pig
Host:	Rabbit
Clonality:	Polyclonal
Conjugate:	This PCTP antibody is un-conjugated
Application:	Western Blotting (WB)

Product Details

Sequence:	QLGERSGVIR VKQYKQLAI ESDGKKGSKV FMYFDNPGG QIPSWLINWA
Predicted Reactivity:	Cow: 85%, Dog: 100%, Guinea Pig: 85%, Human: 100%, Mouse: 93%, Rabbit: 93%, Rat: 93%
Characteristics:	This is a rabbit polyclonal antibody against PCTP. It was validated on Western Blot.
Purification:	Affinity Purified

Target Details

Target:	PCTP
Alternative Name:	PCTP (PCTP Products)
Background:	PCTP catalyzes the transfer of phosphatidylcholine between membranes. PCTP binds a single lipid molecule.

Target Details

Alias Symbols: STARD2

Protein Interaction Partner: AGTRAP, UBC, ACOT13, PAX3,

Protein Size: 142

Molecular Weight: 17 kDa

Gene ID: 58488

NCBI Accession: [NM_001102402](#), [NP_001095872](#)

Application Details

Application Notes: Optimal working dilutions should be determined experimentally by the investigator.

Comment: Antigen size: 142 AA

Restrictions: For Research Use only

Handling

Format: Liquid

Concentration: Lot specific

Buffer: Liquid. Purified antibody supplied in 1x PBS buffer with 0.09 % (w/v) sodium azide and 2 % sucrose.

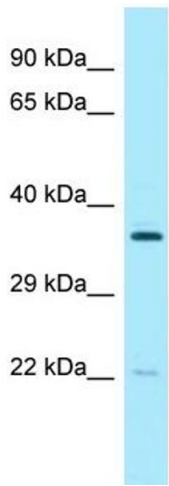
Preservative: Sodium azide

Precaution of Use: This product contains Sodium azide: a POISONOUS AND HAZARDOUS SUBSTANCE which should be handled by trained staff only.

Handling Advice: Avoid repeated freeze-thaw cycles.

Storage: -20 °C

Storage Comment: For short term use, store at 2-8°C up to 1 week. For long term storage, store at -20°C in small aliquots to prevent freeze-thaw cycles.



Rabbit Anti-PCTP Antibody
Catalog Number: ARP64248
Lot Number: QC35013
Lane: 721_B Cell Lysate

Antibody Titration: 1.0µg/ml
Gel Concentration: 12%

Western Blotting

Image 1.