

Datasheet for ABIN2789802
anti-RPL11 antibody (C-Term)[Go to Product page](#)

2 Images

Overview

Quantity:	100 µL
Target:	RPL11
Binding Specificity:	C-Term
Reactivity:	Human, Mouse, Rat, Cow, Zebrafish (Danio rerio), Guinea Pig, Horse, Rabbit, Dog
Host:	Rabbit
Clonality:	Polyclonal
Conjugate:	This RPL11 antibody is un-conjugated
Application:	Western Blotting (WB), Immunohistochemistry (IHC)

Product Details

Immunogen:	The immunogen is a synthetic peptide directed towards the C-terminal region of Human RPL11
Sequence:	DFYVVLGRPG FSIADKKRRT GCIGAKHRIS KEEAMRWFQQ KYDGIILPGK
Predicted Reactivity:	Cow: 100%, Dog: 100%, Guinea Pig: 100%, Horse: 100%, Human: 100%, Mouse: 100%, Rabbit: 100%, Rat: 100%, Zebrafish: 86%
Characteristics:	This is a rabbit polyclonal antibody against RPL11. It was validated on Western Blot.
Purification:	Affinity Purified

Target Details

Target:	RPL11
Alternative Name:	RPL11 (RPL11 Products)

Target Details

Background:	<p>Ribosomes, the organelles that catalyze protein synthesis, consist of a small 40S subunit and a large 60S subunit. Together these subunits are composed of 4 RNA species and approximately 80 structurally distinct proteins. This gene encodes a ribosomal protein that is a component of the 60S subunit. The protein belongs to the L5P family of ribosomal proteins. It is located in the cytoplasm. The protein probably associates with the 5S rRNA. Alternatively spliced transcript variants encoding different isoforms have been found for this gene. As is typical for genes encoding ribosomal proteins, there are multiple processed pseudogenes of this gene dispersed through the genome.</p> <p>Alias Symbols: DBA7, GIG34</p> <p>Protein Interaction Partner: UBC, CAMK2B, PML, FUS, KRTAP10-7, KRT40, TP53, AURKA, CEP250, TUBGCP2, TUBGCP3, CEP57, MDM2, ZBTB1, EED, QRIC1, TARDBP, UBD, NEDD8, MYEOV2, ICAM1, CD81, IGSF8, VHL, PAN2, PELP1, C12orf5, ARFGAP1, PAIP2, UBL4A, VCAM1, STAT3, HP, FN1, ESR1, ITGA4, IGF1R, S</p> <p>Protein Size: 177</p>
-------------	---

Molecular Weight:	20 kDa
-------------------	--------

Gene ID:	6135
----------	------

NCBI Accession:	NM_001199802 , NP_001186731
-----------------	---

UniProt:	P62913
----------	------------------------

Application Details

Application Notes:	Optimal working dilutions should be determined experimentally by the investigator.
--------------------	--

Comment:	Antigen size: 177 AA
----------	----------------------

Restrictions:	For Research Use only
---------------	-----------------------

Handling

Format:	Liquid
---------	--------

Concentration:	Lot specific
----------------	--------------

Buffer:	Liquid. Purified antibody supplied in 1x PBS buffer with 0.09 % (w/v) sodium azide and 2 % sucrose.
---------	---

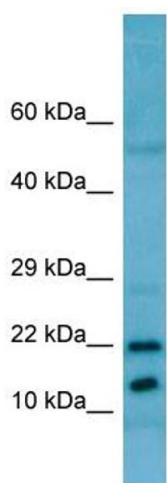
Preservative:	Sodium azide
---------------	--------------

Precaution of Use:	This product contains Sodium azide: a POISONOUS AND HAZARDOUS SUBSTANCE which
--------------------	---

Handling

	should be handled by trained staff only.
Handling Advice:	Avoid repeated freeze-thaw cycles.
Storage:	-20 °C
Storage Comment:	For short term use, store at 2-8°C up to 1 week. For long term storage, store at -20°C in small aliquots to prevent freeze-thaw cycles.

Images

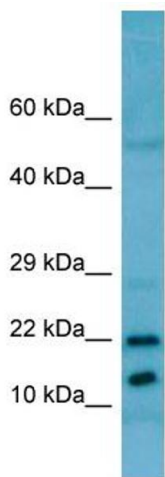


Western Blotting

Image 1. WB Suggested Anti-RPL11 Antibody Titration: 1.0 µg/mL

Positive Control: HeLa Whole Cell

RPL11 is supported by BioGPS gene expression data to be expressed in HeLa



Host: Rabbit
Target Name: RPL11
Sample Tissue: HeLa Cell Lysate
Antibody Dilution: 1.0µg/ml

Western Blotting

Image 2.