

Datasheet for ABIN2789806  
**anti-GPR6 antibody (C-Term)**[Go to Product page](#)

## 1 Image

## Overview

Quantity:	100 µL
Target:	GPR6
Binding Specificity:	C-Term
Reactivity:	Human, Mouse, Rat, Cow, Dog, Pig, Rabbit, Guinea Pig, Horse
Host:	Rabbit
Clonality:	Polyclonal
Conjugate:	This GPR6 antibody is un-conjugated
Application:	Western Blotting (WB)

## Product Details

Immunogen:	The immunogen is a synthetic peptide directed towards the C-terminal region of human GPR6
Sequence:	ATLLPATYNS MINPIIYAFR NQEIQRALWL LLCGCFQSKV PFRSRSPSEV
Predicted Reactivity:	Cow: 86%, Dog: 100%, Guinea Pig: 93%, Horse: 93%, Human: 100%, Mouse: 100%, Pig: 100%, Rabbit: 100%, Rat: 100%
Characteristics:	This is a rabbit polyclonal antibody against GPR6. It was validated on Western Blot.
Purification:	Affinity Purified

## Target Details

Target:	GPR6
Alternative Name:	GPR6 ( <a href="#">GPR6 Products</a> )

## Target Details

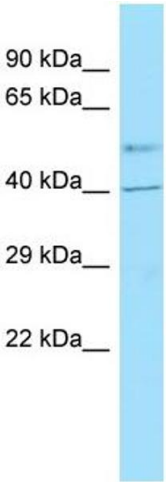
Background:	Protein Size: 377
Molecular Weight:	41 kDa
Gene ID:	2830
NCBI Accession:	<a href="#">NM_001286099</a> , <a href="#">NP_001273028</a>
UniProt:	<a href="#">J3KQR3</a>

## Application Details

Restrictions:	For Research Use only
---------------	-----------------------

## Handling

Format:	Liquid
Concentration:	1 mg/mL
Buffer:	Liquid. Purified antibody supplied in 1x PBS buffer with 0.09 % (w/v) sodium azide and 2 % sucrose.
Preservative:	Sodium azide
Precaution of Use:	This product contains Sodium azide: a POISONOUS AND HAZARDOUS SUBSTANCE which should be handled by trained staff only.
Handling Advice:	Avoid repeat freeze-thaw cycles.
Storage:	-20 °C
Storage Comment:	For short term use, store at 2-8°C up to 1 week. For long term storage, store at -20°C in small aliquots to prevent freeze-thaw cycles.



**Western Blotting**

**Image 1.**