

Datasheet for ABIN2789813  
**anti-LIPM antibody (N-Term)**[Go to Product page](#)

## 1 Image

## Overview

|                      |                                     |
|----------------------|-------------------------------------|
| Quantity:            | 100 µL                              |
| Target:              | LIPM                                |
| Binding Specificity: | N-Term                              |
| Reactivity:          | Human, Pig, Cow                     |
| Host:                | Rabbit                              |
| Clonality:           | Polyclonal                          |
| Conjugate:           | This LIPM antibody is un-conjugated |
| Application:         | Western Blotting (WB)               |

## Product Details

|                       |  |
|-----------------------|--|
| Sequence:             | PCEEYEVATE DGYILSVNRI PRGLVQPKKT GSRPVVLLQH GLVGGASNWI                               |
| Predicted Reactivity: | Cow: 85%, Human: 100%, Pig: 85%  |
| Characteristics:      | This is a rabbit polyclonal antibody against LIPM. It was validated on Western Blot. |
| Purification:         | Affinity Purified  |

## Target Details

|                   |   |
|-------------------|---|
| Target:           | LIPM  |
| Alternative Name: | LIPM ( <a href="#">LIPM Products</a> )  |
| Background:       | LIPM plays a highly specific role in the last step of keratinocyte differentiation. May have an essential function in lipid metabolism of the most differentiated epidermal layers. |

## Target Details

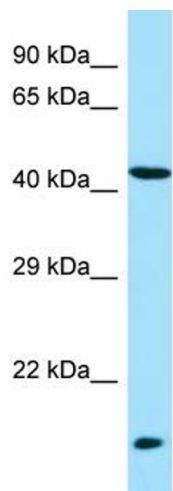
|                   |   |
|-------------------|---|
|                   | Alias Symbols: LIPL3, bA304I5.1                             |
|                   | Protein Size: 423   |
| Molecular Weight: | 46 kDa  |
| Gene ID:          | 340654  |
| NCBI Accession:   | <a href="#">NM_001128215</a> , <a href="#">NP_001121687</a> |
| UniProt:          | <a href="#">Q5VYY2</a>                                      |

## Application Details

|                    |  |
|--------------------|--|
| Application Notes: | Optimal working dilutions should be determined experimentally by the investigator. |
| Comment:           | Antigen size: 423 AA   |
| Restrictions:      | For Research Use only  |

## Handling

|                    |   |
|--------------------|---|
| Format:            | Liquid  |
| Concentration:     | Lot specific  |
| Buffer:            | Liquid. Purified antibody supplied in 1x PBS buffer with 0.09 % (w/v) sodium azide and 2 % sucrose.                                     |
| Preservative:      | Sodium azide  |
| Precaution of Use: | This product contains Sodium azide: a POISONOUS AND HAZARDOUS SUBSTANCE which should be handled by trained staff only.                  |
| Handling Advice:   | Avoid repeated freeze-thaw cycles.  |
| Storage:           | -20 °C  |
| Storage Comment:   | For short term use, store at 2-8°C up to 1 week. For long term storage, store at -20°C in small aliquots to prevent freeze-thaw cycles. |



Rabbit Anti-LIPM Antibody  
Catalog Number: ARP64348  
Lot Number: QC34994  
Lane: Fetal Liver Lysate

Antibody Titration: 1.0µg/ml  
Gel Concentration: 12%

Western Blotting

Image 1.