

Datasheet for ABIN2789816
anti-SEMA7A antibody (C-Term)



[Go to Product page](#)

2 Images

Overview

Quantity:	100 µL
Target:	SEMA7A
Binding Specificity:	C-Term
Reactivity:	Human, Mouse, Rat, Dog, Cow, Guinea Pig, Horse
Host:	Rabbit
Clonality:	Polyclonal
Conjugate:	This SEMA7A antibody is un-conjugated
Application:	Western Blotting (WB)

Product Details

Immunogen:	The immunogen is a synthetic peptide directed towards the C-terminal region of Human SEMA7A
Sequence:	SIYSSERSVL QSINPAEPHK ECPNPKPDKA PLQKVSLAPN SRYYLSCPME
Predicted Reactivity:	Cow: 79%, Dog: 100%, Guinea Pig: 93%, Horse: 93%, Human: 100%, Mouse: 92%, Rat: 93%
Characteristics:	This is a rabbit polyclonal antibody against SEMA7A. It was validated on Western Blot.
Purification:	Affinity Purified

Target Details

Target:	SEMA7A
Alternative Name:	SEMA7A (SEMA7A Products)

Target Details

Background: The protein encoded by this gene binds to cell surfaces through a glycosylphosphatidylinositol (GPI) linkage. The encoded glycoprotein is found on activated lymphocytes and erythrocytes. This protein may be involved in immunomodulatory and neuronal processes. Defects in this gene can result in loss of bone mineral density (BMD). Three transcript variants encoding different isoforms have been found for this gene.

Alias Symbols: CD108, CDw108, H-SEMA-K1, H-Sema-L, JMH, MGC126692, MGC126696, SEMAK1, SEMAL

Protein Interaction Partner: SEMA7A, PLXNC1,

Protein Size: 666

Molecular Weight: 68 kDa

Gene ID: 8482

NCBI Accession: [NM_003612](#), [NP_003603](#)

UniProt: [O75326](#)

Pathways: [Positive Regulation of Immune Effector Process](#), [Production of Molecular Mediator of Immune Response](#), [Regulation of Cell Size](#)

Application Details

Application Notes: Optimal working dilutions should be determined experimentally by the investigator.

Comment: Antigen size: 666 AA

Restrictions: For Research Use only

Handling

Format: Liquid

Concentration: Lot specific

Buffer: Liquid. Purified antibody supplied in 1x PBS buffer with 0.09 % (w/v) sodium azide and 2 % sucrose.

Preservative: Sodium azide

Precaution of Use: This product contains Sodium azide: a POISONOUS AND HAZARDOUS SUBSTANCE which should be handled by trained staff only.

Handling Advice: Avoid repeated freeze-thaw cycles.

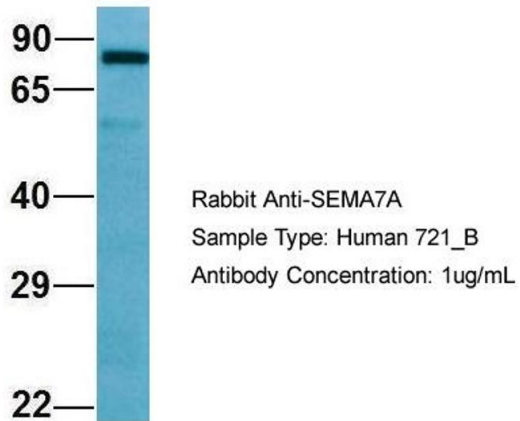
Handling

Storage: -20 °C

Storage Comment: For short term use, store at 2-8°C up to 1 week. For long term storage, store at -20°C in small aliquots to prevent freeze-thaw cycles.

Images

SEMA7A



Western Blotting

Image 1. Host: Rabbit Target Name: SEMA7A Sample Type: 721_B Antibody Dilution: 1.0 µg/ml SEMA7A is supported by BioGPS gene expression data to be expressed in 721_B

Western Blotting

Image 2. WB Suggested Anti-SEMA7A Antibody Titration: 1.0 µg/ml Positive Control: MDA-MB-435S Whole Cell SEMA7A is supported by BioGPS gene expression data to be expressed in MDA-MB435