

Datasheet for ABIN2789819
anti-ORAI3 antibody (N-Term)



[Go to Product page](#)

1 Image

Overview

Quantity:	100 µL
Target:	ORAI3
Binding Specificity:	N-Term
Reactivity:	Human, Rat, Mouse, Cow, Dog, Guinea Pig, Horse, Pig, Rabbit
Host:	Rabbit
Clonality:	Polyclonal
Conjugate:	This ORAI3 antibody is un-conjugated
Application:	Western Blotting (WB)

Product Details

Immunogen:	The immunogen is a synthetic peptide directed towards the N-terminal region of Human ORAI3
Sequence:	GDAGEQAPLN PEGESPAGSA TYREFVHRGY LDLMGASQHS LRALSWRRLY
Predicted Reactivity:	Cow: 93%, Dog: 93%, Guinea Pig: 86%, Horse: 93%, Human: 100%, Mouse: 86%, Pig: 93%, Rabbit: 79%, Rat: 86%
Characteristics:	This is a rabbit polyclonal antibody against ORAI3. It was validated on Western Blot.
Purification:	Affinity Purified

Target Details

Target:	ORAI3
Alternative Name:	ORAI3 (ORAI3 Products)

Target Details

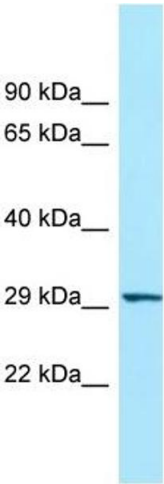
Background:	ORAI3 is a key regulator or component of store-operated Ca ²⁺ channel and transcription factor NFAT nuclear import. Alias Symbols: MGC13024, TMEM142C Protein Interaction Partner: UBC, Protein Size: 295
Molecular Weight:	31 kDa
Gene ID:	93129
NCBI Accession:	NM_152288 , NP_689501
UniProt:	Q9BRQ5

Application Details

Application Notes:	Optimal working dilutions should be determined experimentally by the investigator.
Comment:	Antigen size: 295 AA
Restrictions:	For Research Use only

Handling

Format:	Liquid
Concentration:	Lot specific
Buffer:	Liquid. Purified antibody supplied in 1x PBS buffer with 0.09 % (w/v) sodium azide and 2 % sucrose.
Preservative:	Sodium azide
Precaution of Use:	This product contains Sodium azide: a POISONOUS AND HAZARDOUS SUBSTANCE which should be handled by trained staff only.
Handling Advice:	Avoid repeated freeze-thaw cycles.
Storage:	-20 °C
Storage Comment:	For short term use, store at 2-8°C up to 1 week. For long term storage, store at -20°C in small aliquots to prevent freeze-thaw cycles.



Western Blotting

Image 1. WB Suggested Anti-ORAI3 Antibody Titration: 1.0 ug/ml Positive Control: Placenta