

Datasheet for ABIN2789826
anti-Cyclin I antibody (N-Term)



[Go to Product page](#)

1 Image

Overview

Quantity:	100 µL
Target:	Cyclin I (CCNI)
Binding Specificity:	N-Term
Reactivity:	Human, Mouse, Rat, Guinea Pig, Rabbit, Cow, Dog, Horse
Host:	Rabbit
Clonality:	Polyclonal
Conjugate:	This Cyclin I antibody is un-conjugated
Application:	Western Blotting (WB)

Product Details

Immunogen:	The immunogen is a synthetic peptide directed towards the N-terminal region of Rat Ccni
Sequence:	MKFPGPLENQ RLSSLLERAI SREAQMWKVN VPKIPTNQNV SPSQRDEVIQ
Predicted Reactivity:	Cow: 93%, Dog: 93%, Guinea Pig: 86%, Horse: 93%, Human: 100%, Mouse: 93%, Rabbit: 86%, Rat: 93%
Characteristics:	This is a rabbit polyclonal antibody against Ccni. It was validated on Western Blot.
Purification:	Affinity Purified

Target Details

Target:	Cyclin I (CCNI)
Alternative Name:	Ccni (CCNI Products)

Target Details

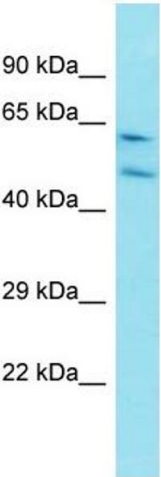
Background:	The function of this protein remains unknown. Alias Symbols: - Protein Size: 377
Molecular Weight:	42 kDa
Gene ID:	289500
NCBI Accession:	NM_001105998 , NP_001099468
UniProt:	D4A5E4
Pathways:	Cell Division Cycle

Application Details

Restrictions:	For Research Use only
---------------	-----------------------

Handling

Format:	Liquid
Concentration:	1 mg/mL
Buffer:	Liquid. Purified antibody supplied in 1x PBS buffer with 0.09 % (w/v) sodium azide and 2 % sucrose.
Preservative:	Sodium azide
Precaution of Use:	This product contains Sodium azide: a POISONOUS AND HAZARDOUS SUBSTANCE which should be handled by trained staff only.
Handling Advice:	Avoid repeat freeze-thaw cycles.
Storage:	-20 °C
Storage Comment:	For short term use, store at 2-8°C up to 1 week. For long term storage, store at -20°C in small aliquots to prevent freeze-thaw cycles.



Western Blotting

Image 1.