

Datasheet for ABIN2789828
anti-RGL1 antibody (C-Term)[Go to Product page](#)

1 Image

Overview

Quantity:	100 µL
Target:	RGL1
Binding Specificity:	C-Term
Reactivity:	Mouse, Human, Rat, Dog, Guinea Pig, Horse, Rabbit
Host:	Rabbit
Clonality:	Polyclonal
Conjugate:	This RGL1 antibody is un-conjugated
Application:	Western Blotting (WB)

Product Details

Sequence:	ADASTTSPKP RKSMVKRLSL LFLGSDMITS PTPTKEQPKS TASGSSGESM
Predicted Reactivity:	Dog: 93%, Guinea Pig: 93%, Horse: 93%, Human: 100%, Mouse: 92%, Rabbit: 86%, Rat: 100%
Characteristics:	This is a rabbit polyclonal antibody against RGL1. It was validated on Western Blot.
Purification:	Affinity Purified

Target Details

Target:	RGL1
Alternative Name:	RGL1 (RGL1 Products)
Background:	RGL1 is a probable guanine nucleotide exchange factor. Alias Symbols: KIAA0959, RGL

Target Details

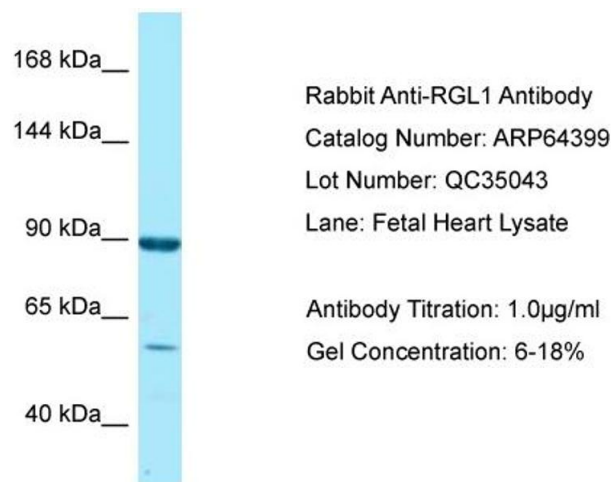
	Protein Interaction Partner: APP, HRAS, RIT2, RIT1, Protein Size: 803
Molecular Weight:	91 kDa
Gene ID:	23179
NCBI Accession:	NM_015149 , NP_055964
Pathways:	Regulation of Lipid Metabolism by PPARalpha

Application Details

Application Notes:	Optimal working dilutions should be determined experimentally by the investigator.
Comment:	Antigen size: 803 AA
Restrictions:	For Research Use only

Handling

Format:	Liquid
Concentration:	Lot specific
Buffer:	Liquid. Purified antibody supplied in 1x PBS buffer with 0.09 % (w/v) sodium azide and 2 % sucrose.
Preservative:	Sodium azide
Precaution of Use:	This product contains Sodium azide: a POISONOUS AND HAZARDOUS SUBSTANCE which should be handled by trained staff only.
Handling Advice:	Avoid repeated freeze-thaw cycles.
Storage:	-20 °C
Storage Comment:	For short term use, store at 2-8°C up to 1 week. For long term storage, store at -20°C in small aliquots to prevent freeze-thaw cycles.



Western Blotting

Image 1.