

Datasheet for ABIN2789862  
**anti-RPS27L antibody (Middle Region)**[Go to Product page](#)

## 1 Image

## Overview

Quantity:	100 µL
Target:	RPS27L
Binding Specificity:	Middle Region
Reactivity:	Human, Rat, Guinea Pig, Rabbit, Dog, Horse, Saccharomyces cerevisiae, Zebrafish (Danio rerio)
Host:	Rabbit
Clonality:	Polyclonal
Conjugate:	This RPS27L antibody is un-conjugated
Application:	Western Blotting (WB)

## Product Details

Immunogen:	The immunogen is a synthetic peptide directed towards the middle region of Rat Rps27l
Sequence:	YFMDVKCPGC YKITTVFSHA QTVVLCVGCS TVLCQPTGGK ARLTEGCSFR
Predicted Reactivity:	Dog: 100%, Guinea Pig: 100%, Horse: 100%, Human: 100%, Rabbit: 100%, Rat: 100%, Yeast: 100%, Zebrafish: 100%
Characteristics:	This is a rabbit polyclonal antibody against Rps27l. It was validated on Western Blot.
Purification:	Affinity Purified

## Target Details

Target:	RPS27L
Alternative Name:	Rps27l ( <a href="#">RPS27L Products</a> )

## Target Details

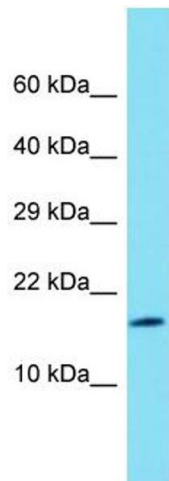
Background:	The function of this protein remains unknown. Alias Symbols: - Protein Size: 112
Molecular Weight:	12 kDa
Gene ID:	681429
NCBI Accession:	<a href="#">XM_001056747</a> , <a href="#">XP_001056747</a>
Pathways:	<a href="#">Positive Regulation of Endopeptidase Activity</a>

## Application Details

Application Notes:	Optimal working dilutions should be determined experimentally by the investigator.
Comment:	Antigen size: 112 AA
Restrictions:	For Research Use only

## Handling

Format:	Liquid
Concentration:	Lot specific
Buffer:	Liquid. Purified antibody supplied in 1x PBS buffer with 0.09 % (w/v) sodium azide and 2 % sucrose.
Preservative:	Sodium azide
Precaution of Use:	This product contains Sodium azide: a POISONOUS AND HAZARDOUS SUBSTANCE which should be handled by trained staff only.
Handling Advice:	Avoid repeated freeze-thaw cycles.
Storage:	-20 °C
Storage Comment:	For short term use, store at 2-8°C up to 1 week. For long term storage, store at -20°C in small aliquots to prevent freeze-thaw cycles.



Western Blotting
<b>Image 1.</b> Host: Rabbit
Target Name: Rps27l
Sample Tissue: Rat Lung lysates
Antibody Dilution: 1.0 µg/mL