



[Go to Product page](#)

Datasheet for ABIN2789870
anti-CYFIP1 antibody (C-Term)

1 Image

Overview

| | |
|----------------------|---|
| Quantity: | 100 µL |
| Target: | CYFIP1 |
| Binding Specificity: | C-Term |
| Reactivity: | Human, Mouse, Rat, Zebrafish (Danio rerio), Cow, Dog, Horse, Rabbit, Guinea Pig, Goat |
| Host: | Rabbit |
| Clonality: | Polyclonal |
| Conjugate: | This CYFIP1 antibody is un-conjugated |
| Application: | Western Blotting (WB) |

Product Details

| | |
|-----------------------|--|
| Immunogen: | The immunogen is a synthetic peptide directed towards the C-terminal region of Human CYFIP1 |
| Sequence: | WAGCMIIVLL GQQRFAVLD FCYHLLKVQK HDGKDEIKN VPLKKMVERI |
| Predicted Reactivity: | Cow: 100%, Dog: 100%, Goat: 93%, Guinea Pig: 100%, Horse: 100%, Human: 100%, Mouse: 100%, Rabbit: 100%, Rat: 100%, Zebrafish: 100% |
| Characteristics: | This is a rabbit polyclonal antibody against CYFIP1. It was validated on Western Blot. |
| Purification: | Affinity Purified |

Target Details

| | |
|---------|--------|
| Target: | CYFIP1 |
|---------|--------|

Target Details

| | |
|-------------------|---|
| Alternative Name: | CYFIP1 (CYFIP1 Products) |
| Background: | <p>CYFIP1 is a component of the CYFIP1-EIF4E-FMR1 complex which binds to the mRNA cap and mediates translational repression. In the CYFIP1-EIF4E-FMR1 complex this subunit is an adapter between EIF4E and FMR1. CYFIP1 promotes the translation repression activity of FMR1 in brain probably by mediating its association with EIF4E and mRNA. By similarity, CYFIP1 regulates formation of membrane ruffles and lamellipodia. CYFIP1 plays a role in axon outgrowth. CYFIP1 binds to F-actin but not to RNA. Part of the WAVE complex that regulates actin filament reorganization via its interaction with the Arp2/3 complex. Actin remodeling activity is regulated by RAC1. Regulator of epithelial morphogenesis. CYFIP1 may act as an invasion suppressor in cancers.</p> <p>Alias Symbols: FLJ45151, P140SRA-1, SHYC, SRA1</p> <p>Protein Interaction Partner: EFHC2, SUMO2, MEOX1, UBC, WWOX, PRPF40A, CLUH, TCERG1, NCKAP1, ARHGEF1, GAS7, APBB1, HECW2, RFX6, EFTUD2, SCTR, PPP1CC, GNB1, UBD, MARK4, YWHAZ, YWHAH, RYK, TERF2, TERF1, CYFIP1, RAC1, FMR1, ACTA1, FXR2, FXR1, NCL,</p> <p>Protein Size: 1253</p> |
| Molecular Weight: | 145 kDa |
| Gene ID: | 23191 |
| NCBI Accession: | NM_014608 , NP_055423 |
| UniProt: | Q7L576 |

Application Details

| | |
|--------------------|--|
| Application Notes: | Optimal working dilutions should be determined experimentally by the investigator. |
| Comment: | Antigen size: 1253 AA |
| Restrictions: | For Research Use only |

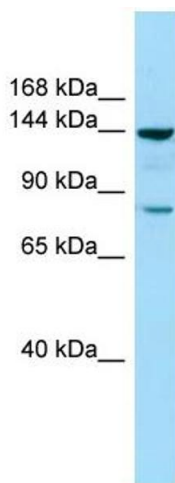
Handling

| | |
|----------------|---|
| Format: | Liquid |
| Concentration: | Lot specific |
| Buffer: | Liquid. Purified antibody supplied in 1x PBS buffer with 0.09 % (w/v) sodium azide and 2 % sucrose. |
| Preservative: | Sodium azide |

Handling

| | |
|--------------------|---|
| Precaution of Use: | This product contains Sodium azide: a POISONOUS AND HAZARDOUS SUBSTANCE which should be handled by trained staff only. |
| Handling Advice: | Avoid repeated freeze-thaw cycles. |
| Storage: | -20 °C |
| Storage Comment: | For short term use, store at 2-8°C up to 1 week. For long term storage, store at -20°C in small aliquots to prevent freeze-thaw cycles. |

Images



Western Blotting

Image 1. WB Suggested Anti-CYFIP1 Antibody Titration: 1.0 ug/ml Positive Control: COLO205 Whole Cell