

Datasheet for ABIN2789871  
**anti-GIGYF2 antibody (N-Term)**[Go to Product page](#)

## 1 Image

## Overview

|                      |  |
|----------------------|--|
| Quantity:            | 100 µL   |
| Target:              | GIGYF2   |
| Binding Specificity: | N-Term   |
| Reactivity:          | Human, Mouse, Dog, Guinea Pig, Horse, Rat, Rabbit, Cow |
| Host:                | Rabbit   |
| Clonality:           | Polyclonal   |
| Conjugate:           | This GIGYF2 antibody is un-conjugated                  |
| Application:         | Western Blotting (WB)                                  |

## Product Details

|                       |   |
|-----------------------|---|
| Immunogen:            | The immunogen is a synthetic peptide directed towards the N-terminal region of human GIGYF2           |
| Sequence:             | DDPGRPNFEE GGPTSVGRKH EFIRSESENW RIFREEQNGE DEDGGWRLAG  |
| Predicted Reactivity: | Cow: 100%, Dog: 100%, Guinea Pig: 100%, Horse: 100%, Human: 100%, Mouse: 100%, Rabbit: 93%, Rat: 100% |
| Characteristics:      | This is a rabbit polyclonal antibody against GIGYF2. It was validated on Western Blot.                |
| Purification:         | Affinity Purified   |

## Target Details

|         |        |
|---------|--------|
| Target: | GIGYF2 |
|---------|--------|

## Target Details

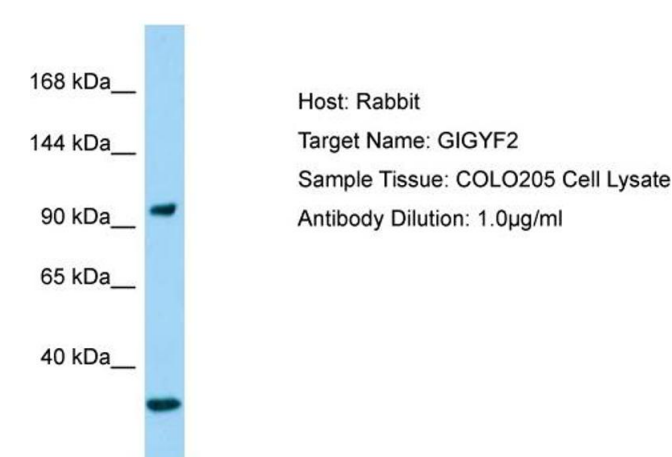
|                   |  |
|-------------------|--|
| Alternative Name: | GIGYF2 ( <a href="#">GIGYF2 Products</a> )   |
| Background:       | <p>This gene contains CAG trinucleotide repeats and encodes a protein containing several stretches of polyglutamine residues. The encoded protein may be involved in the regulation of tyrosine kinase receptor signaling. This gene is located in a chromosomal region that was genetically linked to Parkinson disease type 11, and mutations in this gene were thought to be causative for this disease. However, more recent studies in different populations have been unable to replicate this association. Alternative splicing results in multiple transcript variants.</p> <p>Alias Symbols: GYF2, PERQ2, PERQ3, PARK11, TNRC15</p> <p>Protein Size: 1299</p> |
| Molecular Weight: | 150 kDa  |
| Gene ID:          | 26058  |
| NCBI Accession:   | <a href="#">NM_001103146</a> , <a href="#">NP_001096616</a>  |
| UniProt:          | <a href="#">Q6Y7W6</a>   |
| Pathways:         | <a href="#">Feeding Behaviour</a> , <a href="#">SARS-CoV-2 Protein Interactome</a>   |

## Application Details

|               |                       |
|---------------|-----------------------|
| Restrictions: | For Research Use only |
|---------------|-----------------------|

## Handling

|                    |   |
|--------------------|---|
| Format:            | Liquid  |
| Concentration:     | 1 mg/mL   |
| Buffer:            | Liquid. Purified antibody supplied in 1x PBS buffer with 0.09 % (w/v) sodium azide and 2 % sucrose.                                     |
| Preservative:      | Sodium azide  |
| Precaution of Use: | This product contains Sodium azide: a POISONOUS AND HAZARDOUS SUBSTANCE which should be handled by trained staff only.                  |
| Handling Advice:   | Avoid repeat freeze-thaw cycles.  |
| Storage:           | -20 °C  |
| Storage Comment:   | For short term use, store at 2-8°C up to 1 week. For long term storage, store at -20°C in small aliquots to prevent freeze-thaw cycles. |



Western Blotting

**Image 1.** Host: Rabbit Target Name: GIGYF2 Sample Type: COLO205 Whole Cell lysates Antibody Dilution: 1.0ug/ml