



[Go to Product page](#)

Datasheet for ABIN2789875

anti-SLC17A1 antibody (N-Term)

1 Image

Overview

Quantity:	100 µL
Target:	SLC17A1
Binding Specificity:	N-Term
Reactivity:	Human, Cow, Horse, Dog, Pig
Host:	Rabbit
Clonality:	Polyclonal
Conjugate:	This SLC17A1 antibody is un-conjugated
Application:	Western Blotting (WB)

Product Details

Immunogen:	The immunogen is a synthetic peptide directed towards the N-terminal region of human SLC17A1
Sequence:	VHCCNVIITA QRACLNLTMV VMVNSTDPHG LPNTSTKLL DNIKNP MYNW
Predicted Reactivity:	Cow: 85%, Dog: 83%, Horse: 100%, Human: 100%, Pig: 77%
Characteristics:	This is a rabbit polyclonal antibody against SLC17A1. It was validated on Western Blot.
Purification:	Affinity Purified

Target Details

Target:	SLC17A1
Alternative Name:	SLC17A1 (SLC17A1 Products)

Target Details

Background: Alias Symbols: NPT1, NPT-1, NAPI-1
Protein Size: 209

Molecular Weight: 22 kDa

Gene ID: 6568

NCBI Accession: [NM_005074](#), [NP_005065](#)

UniProt: [Q14916](#)

Application Details

Application Notes: Optimal working dilution should be determined by the investigator.

Restrictions: For Research Use only

Handling

Format: Liquid

Concentration: 1 mg/mL

Buffer: Liquid. Purified antibody supplied in 1x PBS buffer with 0.09 % (w/v) sodium azide and 2 % sucrose.

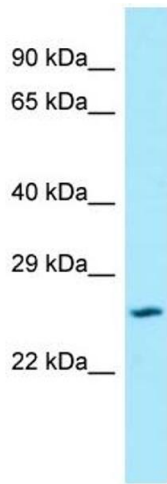
Preservative: Sodium azide

Precaution of Use: This product contains Sodium azide: a POISONOUS AND HAZARDOUS SUBSTANCE which should be handled by trained staff only.

Handling Advice: Avoid repeat freeze-thaw cycles.

Storage: -20 °C

Storage Comment: For short term use, store at 2-8°C up to 1 week. For long term storage, store at -20°C in small aliquots to prevent freeze-thaw cycles.



Western Blotting

Image 1.