



[Go to Product page](#)

Datasheet for ABIN2789879
anti-DRP2 antibody (Middle Region)

1 Image

Overview

Quantity:	100 µL
Target:	DRP2
Binding Specificity:	Middle Region
Reactivity:	Human, Mouse, Rat, Cow, Dog, Guinea Pig, Horse, Rabbit
Host:	Rabbit
Clonality:	Polyclonal
Conjugate:	This DRP2 antibody is un-conjugated
Application:	Western Blotting (WB)

Product Details

Sequence:	LEEPHSESKD TSPKQRIQNL SRFVWKQATV ASELWEKLTA RCVDQHRHIE
Predicted Reactivity:	Cow: 86%, Dog: 86%, Guinea Pig: 93%, Horse: 93%, Human: 100%, Mouse: 79%, Rabbit: 93%, Rat: 86%
Characteristics:	This is a rabbit polyclonal antibody against DRP2. It was validated on Western Blot.
Purification:	Affinity Purified

Target Details

Target:	DRP2
Alternative Name:	DRP2 (DRP2 Products)
Background:	Members of the dystrophin family of proteins perform a critical role in the maintenance of

Target Details

membrane-associated complexes at points of intercellular contact in vertebrate cells. The protein encoded by this gene is predicted to resemble certain short C-terminal isoforms of dystrophin and dystrophin-related protein 1 (DRP1 or utrophin). DRP2 is expressed principally in the brain and spinal cord.

Alias Symbols: GHc-521F8.2

Protein Interaction Partner: PPP1CC, PPP1CA, PRX, DTNA, UTRN, DAG1,

Protein Size: 372

Molecular Weight: 41 kDa

Gene ID: 1821

NCBI Accession: [NM_001171184](#)

UniProt: [Q13474](#)

Application Details

Application Notes: Optimal working dilutions should be determined experimentally by the investigator.

Comment: Antigen size: 372 AA

Restrictions: For Research Use only

Handling

Format: Liquid

Concentration: Lot specific

Buffer: Liquid. Purified antibody supplied in 1x PBS buffer with 0.09 % (w/v) sodium azide and 2 % sucrose.

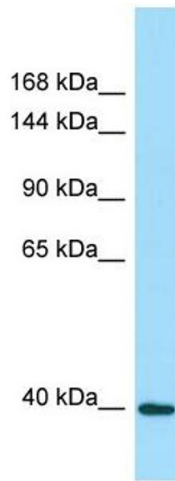
Preservative: Sodium azide

Precaution of Use: This product contains Sodium azide: a POISONOUS AND HAZARDOUS SUBSTANCE which should be handled by trained staff only.

Handling Advice: Avoid repeated freeze-thaw cycles.

Storage: -20 °C

Storage Comment: For short term use, store at 2-8°C up to 1 week. For long term storage, store at -20°C in small aliquots to prevent freeze-thaw cycles.



Western Blotting

Image 1. WB Suggested Anti-DRP2 Antibody Titration: 1.0 ug/ml Positive Control: 721_B Whole Cell