

Datasheet for ABIN2789885  
**anti-RPL4 antibody (C-Term)**[Go to Product page](#)

## 2 Images

## Overview

Quantity:	100 µL
Target:	RPL4
Binding Specificity:	C-Term
Reactivity:	Human, Mouse, Rat, Cow, Dog, Horse, Pig, Goat
Host:	Rabbit
Clonality:	Polyclonal
Conjugate:	This RPL4 antibody is un-conjugated
Application:	Western Blotting (WB)

## Product Details

Sequence:	VVGKKGKKAA VGVKKQKKPL VGKKAATKK PAPEKKPAEK KPTTEKKPA
Predicted Reactivity:	Cow: 86%, Dog: 93%, Goat: 86%, Horse: 86%, Human: 100%, Mouse: 100%, Pig: 100%, Rat: 100%
Characteristics:	This is a rabbit polyclonal antibody against RPL4. It was validated on Western Blot.
Purification:	Affinity Purified

## Target Details

Target:	RPL4
Alternative Name:	RPL4 ( <a href="#">RPL4 Products</a> )
Background:	Ribosomes, the organelles that catalyze protein synthesis, consist of a small 40S subunit and a large 60S subunit. Together these subunits are composed of 4 RNA species and approximately

## Target Details

80 structurally distinct proteins. This gene encodes a ribosomal protein that is a component of the 60S subunit. The protein belongs to the L4E family of ribosomal proteins. It is located in the cytoplasm. As is typical for genes encoding ribosomal proteins, there are multiple processed pseudogenes of this gene dispersed through the genome.

Alias Symbols: L4

Protein Interaction Partner: FUS, HUWE1, IL32, UBC, CEP250, TP53, SUMO3, STAU1, RNF2, PIN1, PRPF40A, APBB1, PARK2, FBXO6, TARDBP, HTT, CD81, ICAM1, IGSF8, PAN2, UBL4A, VCAM1, MAP1LC3A, SORBS1, ITGA4, FN1, EIF4A3, YWHAE, PA2G4, MAGOH, ESR1, RPLP0P6, RPL10L, TUBA1C, NIFK, NOP58, RPS27L

Protein Size: 427

Molecular Weight: 48 kDa

Gene ID: 6124

NCBI Accession: [NM\\_000968](#), [NP\\_000959](#)

UniProt: [P36578](#)

## Application Details

Application Notes: Optimal working dilutions should be determined experimentally by the investigator.

Comment: Antigen size: 427 AA

Restrictions: For Research Use only

## Handling

Format: Liquid

Concentration: Lot specific

Buffer: Liquid. Purified antibody supplied in 1x PBS buffer with 0.09 % (w/v) sodium azide and 2 % sucrose.

Preservative: Sodium azide

Precaution of Use: This product contains Sodium azide: a POISONOUS AND HAZARDOUS SUBSTANCE which should be handled by trained staff only.

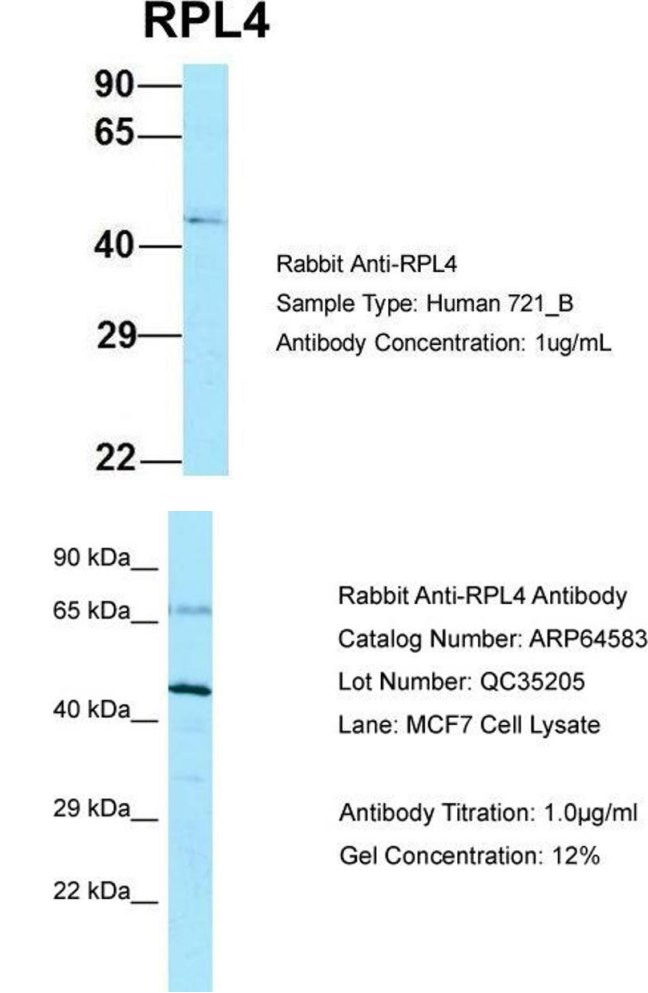
Handling Advice: Avoid repeated freeze-thaw cycles.

Storage: -20 °C

Handling

Storage Comment: For short term use, store at 2-8°C up to 1 week. For long term storage, store at -20°C in small aliquots to prevent freeze-thaw cycles.

Images



Western Blotting

**Image 1.** Host: Rabbit Target Name: RPL4 Sample Type: Human 721\_B Antibody Dilution: 1.0ug/ml RPL4 is strongly supported by BioGPS gene expression data to be expressed in Human 721\_B cells

Western Blotting

**Image 2.** Host: Rabbit Target Name: RPL4 Sample Type: MCF7 lysates Antibody Dilution: 1.0ug/ml