

Datasheet for ABIN2789897
anti-G6PC3 antibody (N-Term)[Go to Product page](#)

5 Images

Overview

Quantity:	100 µL
Target:	G6PC3
Binding Specificity:	N-Term
Reactivity:	Human, Mouse, Rat, Cow, Dog, Guinea Pig, Rabbit, Horse, Sheep, Zebrafish (Danio rerio)
Host:	Rabbit
Clonality:	Polyclonal
Conjugate:	This G6PC3 antibody is un-conjugated
Application:	Western Blotting (WB)

Product Details

Immunogen:	The immunogen is a synthetic peptide directed towards the N-terminal region of Human G6PC3
Sequence:	ESGYYSQAPA QVHQFPSSCE TGPGPSGHG MITGAALWPI MTALSSQVAT
Predicted Reactivity:	Cow: 100%, Dog: 100%, Guinea Pig: 100%, Horse: 100%, Human: 100%, Mouse: 100%, Rabbit: 100%, Rat: 100%, Sheep: 85%, Zebrafish: 86%
Characteristics:	This is a rabbit polyclonal antibody against G6PC3. It was validated on Western Blot.
Purification:	Affinity Purified

Target Details

Target:	G6PC3
Alternative Name:	G6PC3 (G6PC3 Products)

Target Details

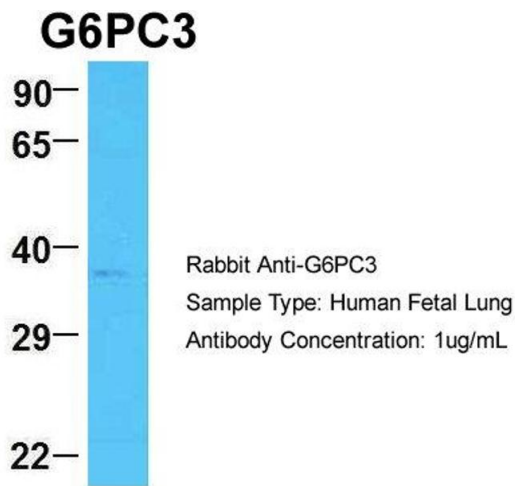
Background:	<p>This gene encodes the catalytic subunit of glucose-6-phosphatase (G6Pase). G6Pase is located in the endoplasmic reticulum (ER) and catalyzes the hydrolysis of glucose-6-phosphate to glucose and phosphate in the last step of the gluconeogenic and glycogenolytic pathways. Mutations in this gene result in autosomal recessive severe congenital neutropenia. Multiple transcript variants have been found for this gene, only one of which is expected to express a protein.</p> <p>Alias Symbols: SCN4, UGRP</p> <p>Protein Size: 346</p>
Molecular Weight:	39 kDa
Gene ID:	92579
NCBI Accession:	NM_138387 , NP_612396
UniProt:	Q9BUM1

Application Details

Application Notes:	Optimal working dilutions should be determined experimentally by the investigator.
Comment:	Antigen size: 346 AA
Restrictions:	For Research Use only

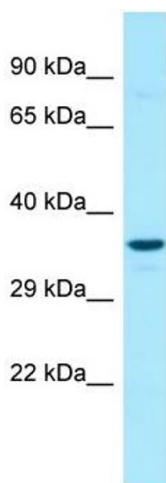
Handling

Format:	Liquid
Concentration:	Lot specific
Buffer:	Liquid. Purified antibody supplied in 1x PBS buffer with 0.09 % (w/v) sodium azide and 2 % sucrose.
Preservative:	Sodium azide
Precaution of Use:	This product contains Sodium azide: a POISONOUS AND HAZARDOUS SUBSTANCE which should be handled by trained staff only.
Handling Advice:	Avoid repeated freeze-thaw cycles.
Storage:	-20 °C
Storage Comment:	For short term use, store at 2-8°C up to 1 week. For long term storage, store at -20°C in small aliquots to prevent freeze-thaw cycles.



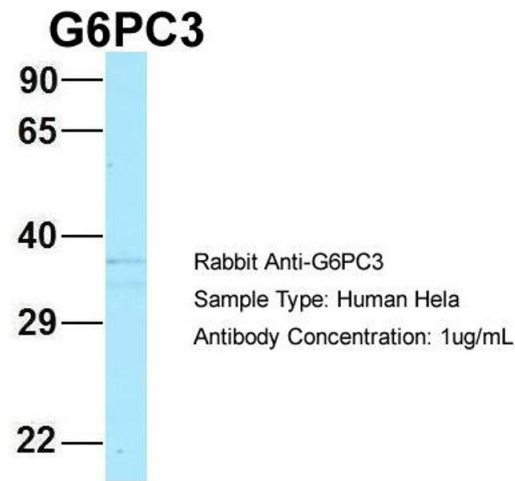
Western Blotting

Image 1. Host: Rabbit Target Name: G6PC3 Sample Type: Human Fetal Lung Antibody Dilution: 1.0ug/ml



Western Blotting

Image 2. WB Suggested Anti-G6PC3 Antibody Titration: 1.0 ug/ml Positive Control: 721_B Whole Cell G6PC3 is strongly supported by BioGPS gene expression data to be expressed in Human 721_B cells



Western Blotting

Image 3. Host: Rabbit Target Name: G6PC3 Sample Type: HeLa Antibody Dilution: 1.0ug/ml G6PC3 is strongly supported by BioGPS gene expression data to be expressed in HeLa

Please check the [product details page](#) for more images. Overall 5 images are available for ABIN2789897.