

Datasheet for ABIN2789902
anti-PDE8B antibody (Middle Region)



[Go to Product page](#)

1 Image

Overview

Quantity:	100 µL
Target:	PDE8B
Binding Specificity:	Middle Region
Reactivity:	Human, Mouse, Horse, Cow, Dog, Pig, Guinea Pig, Rat, Zebrafish (Danio rerio)
Host:	Rabbit
Clonality:	Polyclonal
Conjugate:	This PDE8B antibody is un-conjugated
Application:	Western Blotting (WB)

Product Details

Sequence:	TELYSPQLGT KDEDPHTSDL VGGLMTDGLR RLSGNEYVFT KNVHQSHSHL
Predicted Reactivity:	Cow: 100%, Dog: 100%, Guinea Pig: 93%, Horse: 100%, Human: 100%, Mouse: 100%, Pig: 100%, Rat: 100%, Zebrafish: 79%
Characteristics:	This is a rabbit polyclonal antibody against PDE8B. It was validated on Western Blot.
Purification:	Affinity Purified

Target Details

Target:	PDE8B
Alternative Name:	PDE8B (PDE8B Products)
Background:	The protein encoded by this gene is a cyclic nucleotide phosphodiesterase (PDE) that catalyzes

Target Details

the hydrolysis of the second messenger cAMP. The encoded protein, which does not hydrolyze cGMP, is resistant to several PDE inhibitors. Defects in this gene are a cause of autosomal dominant striatal degeneration (ADSD). Several transcript variants encoding different isoforms have been found for this gene.

Alias Symbols: ADSD, FLJ11212, PPNAD3

Protein Interaction Partner: UBC,

Protein Size: 788

Molecular Weight: 87 kDa

Gene ID: 8622

NCBI Accession: [NM_001029851](#), [NP_001025022](#)

Pathways: [Negative Regulation of Hormone Secretion](#), [cAMP Metabolic Process](#)

Application Details

Application Notes: Optimal working dilutions should be determined experimentally by the investigator.

Comment: Antigen size: 788 AA

Restrictions: For Research Use only

Handling

Format: Liquid

Concentration: Lot specific

Buffer: Liquid. Purified antibody supplied in 1x PBS buffer with 0.09 % (w/v) sodium azide and 2 % sucrose.

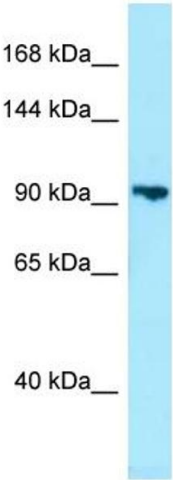
Preservative: Sodium azide

Precaution of Use: This product contains Sodium azide: a POISONOUS AND HAZARDOUS SUBSTANCE which should be handled by trained staff only.

Handling Advice: Avoid repeated freeze-thaw cycles.

Storage: -20 °C

Storage Comment: For short term use, store at 2-8°C up to 1 week. For long term storage, store at -20°C in small aliquots to prevent freeze-thaw cycles.



Rabbit Anti-PDE8B Antibody
Catalog Number: ARP64625
Lot Number: QC35239
Lane: HepG2 Cell Lysate

Antibody Titration: 1.0µg/ml
Gel Concentration: 6-18%

Western Blotting

Image 1.