

Datasheet for ABIN2789916
anti-LTBP4 antibody (C-Term)[Go to Product page](#)

1 Image

Overview

Quantity:	100 µL
Target:	LTBP4
Binding Specificity:	C-Term
Reactivity:	Human, Dog, Horse, Rabbit, Cow
Host:	Rabbit
Clonality:	Polyclonal
Conjugate:	This LTBP4 antibody is un-conjugated
Application:	Western Blotting (WB)

Product Details

Immunogen:	The immunogen is a synthetic peptide directed towards the C-terminal region of Human LTBP4
Sequence:	GGPYGESEAP APPGPGTRWP YRSRDTRRSF PEPEEPPEGG SYAGSLAEPY
Predicted Reactivity:	Cow: 93%, Dog: 86%, Horse: 86%, Human: 100%, Rabbit: 79%
Characteristics:	This is a rabbit polyclonal antibody against LTBP4. It was validated on Western Blot.
Purification:	Affinity Purified

Target Details

Target:	LTBP4
Alternative Name:	LTBP4 (LTBP4 Products)
Background:	The protein encoded by this gene binds transforming growth factor beta (TGFB) as it is

Target Details

secreted and targeted to the extracellular matrix. TGFB is biologically latent after secretion and insertion into the extracellular matrix, and sheds TGFB and other proteins upon activation.

Defects in this gene may be a cause of cutis laxa and severe pulmonary, gastrointestinal, and urinary abnormalities. Three transcript variants encoding different isoforms have been found for this gene.

Protein Interaction Partner: FBXO6, HCVgp1, FRAT1, UBC, RAC1, FBLN1, CRY1, GFI1B, ATN1, ITSN2, CRKL, ATXN7, CACNA1A, TGFB1, TRIB3,

Protein Size: 636

Molecular Weight:	69 kDa
-------------------	--------

Gene ID:	8425
----------	------

Pathways:	Hormone Transport, Growth Factor Binding
-----------	--

Application Details

Restrictions:	For Research Use only
---------------	-----------------------

Handling

Format:	Liquid
---------	--------

Concentration:	1 mg/mL
----------------	---------

Buffer:	Liquid. Purified antibody supplied in 1x PBS buffer with 0.09 % (w/v) sodium azide and 2 % sucrose.
---------	---

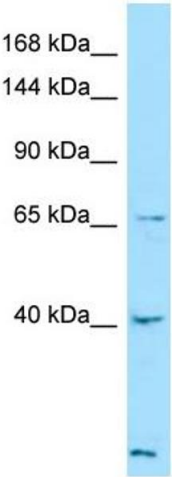
Preservative:	Sodium azide
---------------	--------------

Precaution of Use:	This product contains Sodium azide: a POISONOUS AND HAZARDOUS SUBSTANCE which should be handled by trained staff only.
--------------------	--

Handling Advice:	Avoid repeat freeze-thaw cycles.
------------------	----------------------------------

Storage:	-20 °C
----------	--------

Storage Comment:	For short term use, store at 2-8°C up to 1 week. For long term storage, store at -20°C in small aliquots to prevent freeze-thaw cycles.
------------------	---



Western Blotting

Image 1.