



[Go to Product page](#)

Datasheet for ABIN2789927

anti-G Protein-Coupled Receptor 12 antibody (C-Term)

1 Image

Overview

Quantity:	100 µL
Target:	G Protein-Coupled Receptor 12 (GPR12)
Binding Specificity:	C-Term
Reactivity:	Human, Mouse, Rat, Horse, Pig, Cow, Dog, Rabbit
Host:	Rabbit
Clonality:	Polyclonal
Conjugate:	This G Protein-Coupled Receptor 12 antibody is un-conjugated
Application:	Western Blotting (WB)

Product Details

Immunogen:	The immunogen is a synthetic peptide directed towards the C-terminal region of Human GPR12
Sequence:	SICLGLLPVM GWNCLRDEST CSVVRPLTKN NAAILSVSFL FMFALMLQLY
Predicted Reactivity:	Cow: 100%, Dog: 100%, Horse: 100%, Human: 100%, Mouse: 100%, Pig: 100%, Rabbit: 100%, Rat: 100%
Characteristics:	This is a rabbit polyclonal antibody against GPR12. It was validated on Western Blot.
Purification:	Affinity Purified

Target Details

Target:	G Protein-Coupled Receptor 12 (GPR12)
Alternative Name:	GPR12 (GPR12 Products)

Target Details

Background: GPR12 promotes neurite outgrowth and blocks myelin inhibition in neurons. GPR12 is a receptor with constitutive G(s) signaling activity that stimulates cyclic AMP production.
Alias Symbols: FLJ18149, FLJ97704, GPCR12, GPCR21, MGC138349, MGC138351
Protein Interaction Partner: PPP1CA, APP,
Protein Size: 334

Molecular Weight: 37 kDa

Gene ID: 2835

NCBI Accession: [NM_005288](#), [NP_005279](#)

UniProt: [P47775](#)

Application Details

Application Notes: Optimal working dilutions should be determined experimentally by the investigator.

Comment: Antigen size: 334 AA

Restrictions: For Research Use only

Handling

Format: Liquid

Concentration: Lot specific

Buffer: Liquid. Purified antibody supplied in 1x PBS buffer with 0.09 % (w/v) sodium azide and 2 % sucrose.

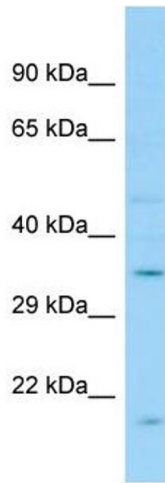
Preservative: Sodium azide

Precaution of Use: This product contains Sodium azide: a POISONOUS AND HAZARDOUS SUBSTANCE which should be handled by trained staff only.

Handling Advice: Avoid repeated freeze-thaw cycles.

Storage: -20 °C

Storage Comment: For short term use, store at 2-8°C up to 1 week. For long term storage, store at -20°C in small aliquots to prevent freeze-thaw cycles.



Western Blotting

Image 1. WB Suggested Anti-GPR12 Antibody Titration: 1.0 ug/ml Positive Control: Fetal Liver