

Datasheet for ABIN2789934
anti-PREPL antibody (C-Term)



[Go to Product page](#)

1 Image

Overview

| | |
|----------------------|---|
| Quantity: | 100 µL |
| Target: | PREPL |
| Binding Specificity: | C-Term |
| Reactivity: | Human, Mouse, Rat, Dog, Guinea Pig, Horse, Pig, Rabbit, Cow |
| Host: | Rabbit |
| Clonality: | Polyclonal |
| Conjugate: | This PREPL antibody is un-conjugated |
| Application: | Western Blotting (WB) |

Product Details

| | |
|-----------------------|---|
| Immunogen: | The immunogen is a synthetic peptide directed towards the C-terminal region of Mouse Prepl |
| Sequence: | LRAVTLLEAPF LDVLTNTMLDT TLPLTLEELE EWGNPSSDEK HKNYIKRYCP |
| Predicted Reactivity: | Cow: 93%, Dog: 100%, Guinea Pig: 86%, Horse: 100%, Human: 100%, Mouse: 100%, Pig: 100%, Rabbit: 100%, Rat: 100% |
| Characteristics: | This is a rabbit polyclonal antibody against Prepl. It was validated on Western Blot. |
| Purification: | Affinity Purified |

Target Details

| | |
|-------------------|--|
| Target: | PREPL |
| Alternative Name: | Prepl (PREPL Products) |

Target Details

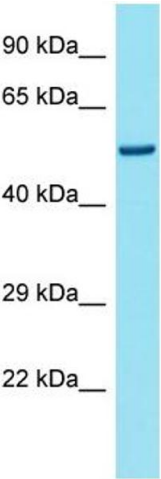
| | |
|-------------------|---|
| Background: | Prepl is a probable serine peptidase whose precise substrate specificity remains unclear. It does not cleave peptides after a arginine or lysine residue. Alias Symbols: 2810457N15Rik, 9530014L06Rik, D030028O16Rik, mKIAA0436 Protein Size: 458 |
| Molecular Weight: | 50 kDa |
| Gene ID: | 213760 |
| NCBI Accession: | NM_145984 , NP_666096 |

Application Details

| | |
|--------------------|--|
| Application Notes: | Optimal working dilution should be determined by the investigator. |
| Restrictions: | For Research Use only |

Handling

| | |
|--------------------|---|
| Format: | Liquid |
| Concentration: | 1 mg/mL |
| Buffer: | Liquid. Purified antibody supplied in 1x PBS buffer with 0.09 % (w/v) sodium azide and 2 % sucrose. |
| Preservative: | Sodium azide |
| Precaution of Use: | This product contains Sodium azide: a POISONOUS AND HAZARDOUS SUBSTANCE which should be handled by trained staff only. |
| Handling Advice: | Avoid repeat freeze-thaw cycles. |
| Storage: | -20 °C |
| Storage Comment: | For short term use, store at 2-8°C up to 1 week. For long term storage, store at -20°C in small aliquots to prevent freeze-thaw cycles. |



Western Blotting

Image 1.