

Datasheet for ABIN2789956
anti-EAF2 antibody (C-Term)



[Go to Product page](#)

1 Image

Overview

| | |
|----------------------|-------------------------------------|
| Quantity: | 100 µL |
| Target: | EAF2 |
| Binding Specificity: | C-Term |
| Reactivity: | Human |
| Host: | Rabbit |
| Clonality: | Polyclonal |
| Conjugate: | This EAF2 antibody is un-conjugated |
| Application: | Western Blotting (WB) |

Product Details

| | |
|-----------------------|---|
| Immunogen: | The immunogen is a synthetic peptide directed towards the C-terminal region of Human EAF2 |
| Sequence: | SSSSEDSSSD SEDEDCKSST SDTGNCVSGH PTMTQYRIPD IDASHNRFRD |
| Predicted Reactivity: | Human: 100% |
| Characteristics: | This is a rabbit polyclonal antibody against EAF2. It was validated on Western Blot. |
| Purification: | Affinity Purified |

Target Details

| | |
|-------------------|--|
| Target: | EAF2 |
| Alternative Name: | EAF2 (EAF2 Products) |
| Background: | EAF2 acts as a transcriptional transactivator of TCEA1 elongation activity and a transcriptional |

Target Details

transactivator of ELL and ELL2 elongation activities. EAF2 is a potent inducer of apoptosis in prostatic and non-prostatic cell lines and inhibits prostate tumor growth in vivo.

Alias Symbols: BM040, TRAITS, U19

Protein Interaction Partner: BEND7, TRIM23, BIRC2, AFF4, ELL2, MED26, TFPT, TCEA2, EAF2, TCEA1, ELL,

Protein Size: 260

Molecular Weight: 29 kDa

Gene ID: 55840

NCBI Accession: [NM_018456](#), [NP_060926](#)

UniProt: [Q96CJ1](#)

Application Details

Application Notes: Optimal working dilutions should be determined experimentally by the investigator.

Comment: Antigen size: 260 AA

Restrictions: For Research Use only

Handling

Format: Liquid

Concentration: Lot specific

Buffer: Liquid. Purified antibody supplied in 1x PBS buffer with 0.09 % (w/v) sodium azide and 2 % sucrose.

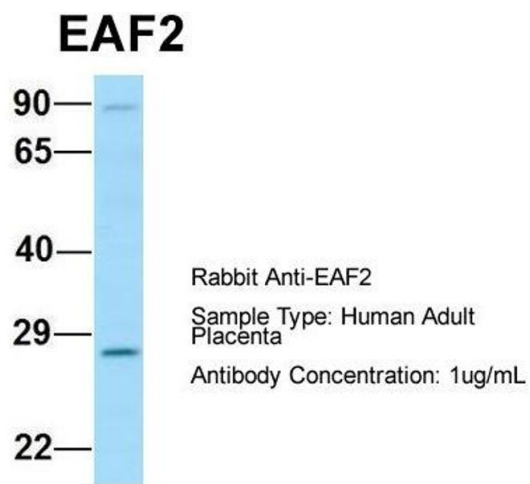
Preservative: Sodium azide

Precaution of Use: This product contains Sodium azide: a POISONOUS AND HAZARDOUS SUBSTANCE which should be handled by trained staff only.

Handling Advice: Avoid repeated freeze-thaw cycles.

Storage: -20 °C

Storage Comment: For short term use, store at 2-8°C up to 1 week. For long term storage, store at -20°C in small aliquots to prevent freeze-thaw cycles.



Western Blotting

Image 1. Host: Rabbit
Target Name: EAF2
Sample Tissue: Human Adult Placenta
Antibody Dilution: 1.0 µg/mL