

Datasheet for ABIN2789963
anti-MMP28 antibody (N-Term)



[Go to Product page](#)

1 Image

Overview

Quantity:	100 µL
Target:	MMP28
Binding Specificity:	N-Term
Reactivity:	Human, Dog
Host:	Rabbit
Clonality:	Polyclonal
Conjugate:	This MMP28 antibody is un-conjugated
Application:	Western Blotting (WB)

Product Details

Immunogen:	The immunogen is a synthetic peptide directed towards the N-terminal region of human MMP28
Sequence:	LDAQPAERGG QELRKEAEAF LEKYGYLNEQ VPKAPTSTRF SDAIRAFQWV
Predicted Reactivity:	Dog: 92%, Human: 100%
Characteristics:	This is a rabbit polyclonal antibody against MMP28. It was validated on Western Blot.
Purification:	Affinity Purified

Target Details

Target:	MMP28
Alternative Name:	MMP28 (MMP28 Products)

Target Details

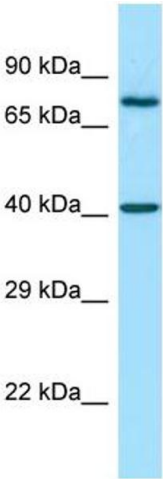
Background:	<p>Proteins of the matrix metalloproteinase (MMP) family are involved in the breakdown of extracellular matrix for both normal physiological processes, such as embryonic development, reproduction and tissue remodeling, and disease processes, such as asthma and metastasis. This gene encodes a secreted enzyme that degrades casein. Its expression pattern suggests that it plays a role in tissue homeostasis and in wound repair. Alternative splicing of this gene results in multiple transcript variants.</p> <p>Alias Symbols: MM28, MMP25, MMP-25, MMP-28, EPILYSIN</p> <p>Protein Size: 393</p>
Molecular Weight:	43 kDa
Gene ID:	79148
NCBI Accession:	NM_032950 , NP_116568
UniProt:	C0H5X0

Application Details

Restrictions:	For Research Use only
---------------	-----------------------

Handling

Format:	Liquid
Concentration:	1 mg/mL
Buffer:	Liquid. Purified antibody supplied in 1x PBS buffer with 0.09 % (w/v) sodium azide and 2 % sucrose.
Preservative:	Sodium azide
Precaution of Use:	This product contains Sodium azide: a POISONOUS AND HAZARDOUS SUBSTANCE which should be handled by trained staff only.
Handling Advice:	Avoid repeat freeze-thaw cycles.
Storage:	-20 °C
Storage Comment:	For short term use, store at 2-8°C up to 1 week. For long term storage, store at -20°C in small aliquots to prevent freeze-thaw cycles.



Western Blotting

Image 1.