

Datasheet for ABIN2789966
anti-SYNPO2 antibody (C-Term)[Go to Product page](#)

1 Image

Overview

Quantity:	100 µL
Target:	SYNPO2
Binding Specificity:	C-Term
Reactivity:	Human, Mouse, Rat, Guinea Pig, Horse, Cow, Dog, Rabbit
Host:	Rabbit
Clonality:	Polyclonal
Conjugate:	This SYNPO2 antibody is un-conjugated
Application:	Western Blotting (WB)

Product Details

Sequence:	FTFKEPKVSP NPELLSLLQN SEGKRG TGAG GDSGPEEDYL SLGAEACNFM
Predicted Reactivity:	Cow: 79%, Dog: 93%, Guinea Pig: 100%, Horse: 100%, Human: 100%, Mouse: 79%, Rabbit: 86%, Rat: 100%
Characteristics:	This is a rabbit polyclonal antibody against SYNPO2. It was validated on Western Blot.
Purification:	Affinity Purified

Target Details

Target:	SYNPO2
Alternative Name:	SYNPO2 (SYNPO2 Products)
Background:	SYNPO2 has an actin-binding and actin-bundling activity.

Target Details

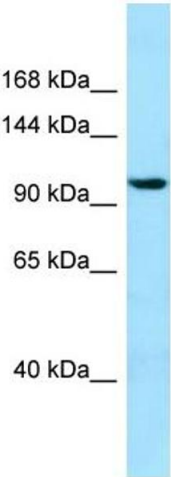
	Alias Symbols: DKFZp686G051
	Protein Interaction Partner: FLNC, FLNA, ACTN2, MAP1LC3A, VPS18, ATG16L1, BAG3, SQSTM1, STX7, HSPA8, CDK6, IPO13, UBC, YWHAZ, YWHAG,
	Protein Size: 1093
Molecular Weight:	117 kDa
Gene ID:	171024
NCBI Accession:	NM_001128933 , NP_001122405

Application Details

Application Notes:	Optimal working dilutions should be determined experimentally by the investigator.
Comment:	Antigen size: 1093 AA
Restrictions:	For Research Use only

Handling

Format:	Liquid
Concentration:	Lot specific
Buffer:	Liquid. Purified antibody supplied in 1x PBS buffer with 0.09 % (w/v) sodium azide and 2 % sucrose.
Preservative:	Sodium azide
Precaution of Use:	This product contains Sodium azide: a POISONOUS AND HAZARDOUS SUBSTANCE which should be handled by trained staff only.
Handling Advice:	Avoid repeated freeze-thaw cycles.
Storage:	-20 °C
Storage Comment:	For short term use, store at 2-8°C up to 1 week. For long term storage, store at -20°C in small aliquots to prevent freeze-thaw cycles.



Western Blotting

Image 1. WB Suggested Anti-SYNPO2 Antibody Titration:
1.0 ug/ml Positive Control: 721_B Whole Cell