



[Go to Product page](#)

Datasheet for ABIN2789976  
**anti-GSPT1 antibody (N-Term)**

1 Image

### Overview

Quantity:	100 µL
Target:	GSPT1
Binding Specificity:	N-Term
Reactivity:	Human, Rat, Pig, Dog, Cow, Rabbit
Host:	Rabbit
Clonality:	Polyclonal
Conjugate:	This GSPT1 antibody is un-conjugated
Application:	Western Blotting (WB)

### Product Details

Immunogen:	The immunogen is a synthetic peptide directed towards the N-terminal region of Human GSPT1
Sequence:	AGGRAAPVES SQEEQSLCEG SNSAVSMELS EPIENGETEM SPEESWEHKE
Predicted Reactivity:	Cow: 93%, Dog: 87%, Human: 100%, Pig: 87%, Rabbit: 100%, Rat: 93%
Characteristics:	This is a rabbit polyclonal antibody against GSPT1. It was validated on Western Blot.
Purification:	Affinity Purified

### Target Details

Target:	GSPT1
Alternative Name:	GSPT1 ( <a href="#">GSPT1 Products</a> )
Background:	The function of this protein remains unknown.

## Target Details

---

Alias Symbols: 551G9.2, ETF3A, FLJ38048, FLJ39067, GST1, eRF3a

Protein Interaction Partner: UBC, SNX2, RDX, IDE, CTTN, ATP6V1C1, GSPT2, RTF1, ATG7, UBD, SMG1, UPF1, PIK3R1, RBM8A, ETF1, PABPC1, CCT2, DHX16, SPTAN1, HINFP, ATXN1, UBR5, HHV8GK18\_gp81, ELAVL1, SUMO2, BECN1, BIRC2, BIRC3, CDKN2A, XIAP, GSPT1, RNASEL,  
Protein Size: 636

---

Molecular Weight: 70 kDa

---

Gene ID: 2935

---

NCBI Accession: [NM\\_001130006](#), [NP\\_001123478](#)

---

UniProt: [P15170](#)

## Application Details

---

Application Notes: Optimal working dilutions should be determined experimentally by the investigator.

---

Comment: Antigen size: 636 AA

---

Restrictions: For Research Use only

## Handling

---

Format: Liquid

---

Concentration: Lot specific

---

Buffer: Liquid. Purified antibody supplied in 1x PBS buffer with 0.09 % (w/v) sodium azide and 2 % sucrose.

---

Preservative: Sodium azide

---

Precaution of Use: This product contains Sodium azide: a POISONOUS AND HAZARDOUS SUBSTANCE which should be handled by trained staff only.

---

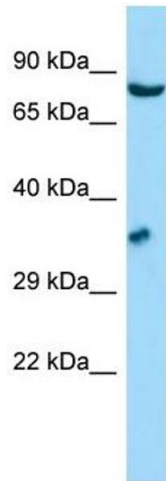
Handling Advice: Avoid repeated freeze-thaw cycles.

---

Storage: -20 °C

---

Storage Comment: For short term use, store at 2-8°C up to 1 week. For long term storage, store at -20°C in small aliquots to prevent freeze-thaw cycles.



### Western Blotting

**Image 1.** WB Suggested Anti-GSPT1 Antibody Titration: 1.0 ug/ml Positive Control: HepG2 Whole Cell GSPT1 is strongly supported by BioGPS gene expression data to be expressed in Human HepG2 cells