

Datasheet for ABIN2789979  
**anti-NUTF2 antibody (Middle Region)**[Go to Product page](#)

## 1 Image

## Overview

Quantity:	100 µL
Target:	NUTF2
Binding Specificity:	Middle Region
Reactivity:	Human, Rat, Mouse, Cow, Dog, Guinea Pig, Horse, Rabbit, Zebrafish (Danio rerio)
Host:	Rabbit
Clonality:	Polyclonal
Conjugate:	This NUTF2 antibody is un-conjugated
Application:	Western Blotting (WB)

## Product Details

Immunogen:	The immunogen is a synthetic peptide directed towards the middle region of Human NUTF2
Sequence:	KIQHSITAQD HQTPDSCII SMVVGQLKAD EDPIMGFHHQM FLLKNINDAW
Predicted Reactivity:	Cow: 100%, Dog: 100%, Guinea Pig: 100%, Horse: 100%, Human: 100%, Mouse: 100%, Rabbit: 100%, Rat: 100%, Zebrafish: 100%
Characteristics:	This is a rabbit polyclonal antibody against NUTF2. It was validated on Western Blot.
Purification:	Affinity Purified

## Target Details

Target:	NUTF2
Alternative Name:	NUTF2 ( <a href="#">NUTF2 Products</a> )

## Target Details

Background:	<p>The protein encoded by this gene is a cytosolic factor that facilitates protein transport into the nucleus. It interacts with the nuclear pore complex glycoprotein p62. This encoded protein acts at a relative late stage of nuclear protein import, subsequent to the initial docking of nuclear import ligand at the nuclear envelope. It is thought to be part of a multicomponent system of cytosolic factors that assemble at the pore complex during nuclear import.</p> <p>Alias Symbols: NTF2, PP15</p> <p>Protein Interaction Partner: RAN, NUP62, NUTF2, UBC, NXF1, ELAVL1, LUC7L2, NUP54, PTMA, KPNB1, NUP153,</p> <p>Protein Size: 127</p>
Molecular Weight:	14 kDa
Gene ID:	10204
NCBI Accession:	<a href="#">NM_005796</a> , <a href="#">NP_005787</a>
UniProt:	<a href="#">P61970</a>
Pathways:	<a href="#">Protein targeting to Nucleus</a> , <a href="#">SARS-CoV-2 Protein Interactome</a>

## Application Details

Application Notes:	Optimal working dilutions should be determined experimentally by the investigator.
Comment:	Antigen size: 127 AA
Restrictions:	For Research Use only

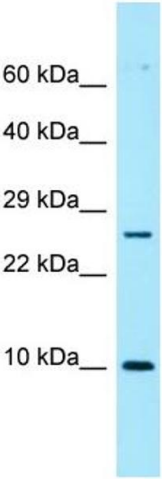
## Handling

Format:	Liquid
Concentration:	Lot specific
Buffer:	Liquid. Purified antibody supplied in 1x PBS buffer with 0.09 % (w/v) sodium azide and 2 % sucrose.
Preservative:	Sodium azide
Precaution of Use:	This product contains Sodium azide: a POISONOUS AND HAZARDOUS SUBSTANCE which should be handled by trained staff only.
Handling Advice:	Avoid repeated freeze-thaw cycles.
Storage:	-20 °C

## Handling

Storage Comment: For short term use, store at 2-8°C up to 1 week. For long term storage, store at -20°C in small aliquots to prevent freeze-thaw cycles.

## Images



### Western Blotting

**Image 1.** WB Suggested Anti-NUTF2 Antibody Titration: 1.0 ug/ml Positive Control: ACHN Whole Cell NUTF2 is supported by BioGPS gene expression data to be expressed in ACHN