



[Go to Product page](#)

Datasheet for ABIN2789987  
**anti-LRRC7 antibody (C-Term)**

1 Image

### Overview

Quantity:	100 µL
Target:	LRRC7
Binding Specificity:	C-Term
Reactivity:	Human, Mouse, Rat, Guinea Pig, Horse, Pig, Rabbit, Cow, Dog
Host:	Rabbit
Clonality:	Polyclonal
Conjugate:	This LRRC7 antibody is un-conjugated
Application:	Western Blotting (WB)

### Product Details

Sequence:	YNLGNYGDKP SDNSDLKTRP TPKGEEESCG KMPADWRQQL LRHIEARRLD
Predicted Reactivity:	Cow: 93%, Dog: 93%, Guinea Pig: 86%, Horse: 93%, Human: 100%, Mouse: 86%, Pig: 93%, Rabbit: 93%, Rat: 93%
Characteristics:	This is a rabbit polyclonal antibody against LRRC7. It was validated on Western Blot.
Purification:	Affinity Purified

### Target Details

Target:	LRRC7
Alternative Name:	LRRC7 ( <a href="#">LRRC7 Products</a> )
Background:	The function of this protein remains known.

## Target Details

---

Alias Symbols: DENSIN

Protein Interaction Partner: HOMEZ, UBC, NQO2, CUL3, BAI1, LRRRC7, CTNND2, TOR1A, CAMK2A, CNKSR2, ACTN4, CAMK2G, CDH2, ACTN2, DLG4, SSSCA1,

Protein Size: 831

---

Molecular Weight: 91 kDa

---

Gene ID: 57554

---

NCBI Accession: [NM\\_020794](#)

---

UniProt: [Q96NW7](#)

---

Pathways: [Synaptic Membrane](#)

## Application Details

---

Application Notes: Optimal working dilutions should be determined experimentally by the investigator.

---

Comment: Antigen size: 831 AA

---

Restrictions: For Research Use only

## Handling

---

Format: Liquid

---

Concentration: Lot specific

---

Buffer: Liquid. Purified antibody supplied in 1x PBS buffer with 0.09 % (w/v) sodium azide and 2 % sucrose.

---

Preservative: Sodium azide

---

Precaution of Use: This product contains Sodium azide: a POISONOUS AND HAZARDOUS SUBSTANCE which should be handled by trained staff only.

---

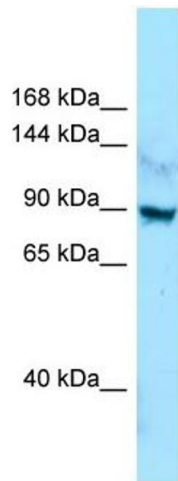
Handling Advice: Avoid repeated freeze-thaw cycles.

---

Storage: -20 °C

---

Storage Comment: For short term use, store at 2-8°C up to 1 week. For long term storage, store at -20°C in small aliquots to prevent freeze-thaw cycles.



### Western Blotting

**Image 1.** WB Suggested Anti-LRRC7 Antibody Titration: 1.0 ug/ml Positive Control: Jurkat Whole Cell