



[Go to Product page](#)

Datasheet for ABIN2789988
anti-LTV1 antibody (C-Term)

1 Image

Overview

Quantity:	100 µL
Target:	LTV1
Binding Specificity:	C-Term
Reactivity:	Human, Mouse, Rat, Horse, Cow, Dog, Guinea Pig, Rabbit
Host:	Rabbit
Clonality:	Polyclonal
Conjugate:	This LTV1 antibody is un-conjugated
Application:	Western Blotting (WB)

Product Details

Sequence:	DLPKVSTQPR SKNESKEDKR ARKQAIKEER KERRVEKKAN KLAFKLEKRR
Predicted Reactivity:	Cow: 92%, Dog: 93%, Guinea Pig: 86%, Horse: 100%, Human: 100%, Mouse: 86%, Rabbit: 93%, Rat: 93%
Characteristics:	This is a rabbit polyclonal antibody against LTV1. It was validated on Western Blot.
Purification:	Affinity Purified

Target Details

Target:	LTV1
Alternative Name:	LTV1 (LTV1 Products)
Background:	The function of this protein remains known.

Target Details

Alias Symbols: C6orf93, FLJ14909, FLJ18519, dJ468K18.4

Protein Interaction Partner: BYSL, UBC, FTSJ3, LIN28A, VHL, CBX8, CSNK2A1, TUBA1B, RCN1, SUMO2, Csnk1e,

Protein Size: 475

Molecular Weight: 55 kDa

Gene ID: 84946

NCBI Accession: [NM_032860](#), [NP_116249](#)

UniProt: [Q96GA3](#)

Application Details

Application Notes: Optimal working dilutions should be determined experimentally by the investigator.

Comment: Antigen size: 475 AA

Restrictions: For Research Use only

Handling

Format: Liquid

Concentration: Lot specific

Buffer: Liquid. Purified antibody supplied in 1x PBS buffer with 0.09 % (w/v) sodium azide and 2 % sucrose.

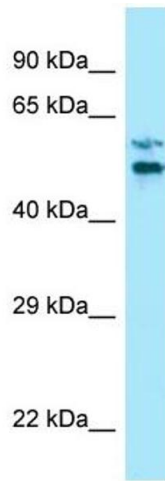
Preservative: Sodium azide

Precaution of Use: This product contains Sodium azide: a POISONOUS AND HAZARDOUS SUBSTANCE which should be handled by trained staff only.

Handling Advice: Avoid repeated freeze-thaw cycles.

Storage: -20 °C

Storage Comment: For short term use, store at 2-8°C up to 1 week. For long term storage, store at -20°C in small aliquots to prevent freeze-thaw cycles.



Western Blotting

Image 1. WB Suggested Anti-LTV1 Antibody Titration: 1.0 ug/ml Positive Control: Placenta