

Datasheet for ABIN2789990
anti-ATL1 antibody (C-Term)



[Go to Product page](#)

1 Image

Overview

Quantity:	100 µL
Target:	ATL1
Binding Specificity:	C-Term
Reactivity:	Human, Mouse, Rat, Cow, Dog, Horse, Pig, Rabbit
Host:	Rabbit
Clonality:	Polyclonal
Conjugate:	This ATL1 antibody is un-conjugated
Application:	Western Blotting (WB)

Product Details

Immunogen:	The immunogen is a synthetic peptide directed towards the C-terminal region of human ATL1
Sequence:	DQVAAALWDQ GSTNEALYKL YSAAATHRHL YHQAFPTPKS ESTEQSEKKK
Predicted Reactivity:	Cow: 100%, Dog: 100%, Horse: 100%, Human: 100%, Mouse: 77%, Pig: 100%, Rabbit: 92%, Rat: 92%
Characteristics:	This is a rabbit polyclonal antibody against SPG3A. It was validated on Western Blot.
Purification:	Affinity Purified

Target Details

Target:	ATL1
Alternative Name:	SPG3A (ATL1 Products)

Target Details

Background:	<p>The protein encoded by this gene is a GTPase and a Golgi body transmembrane protein. The encoded protein can form a homotetramer and has been shown to interact with spastin and with mitogen-activated protein kinase kinase kinase 4. This protein may be involved in axonal maintenance as evidenced by the fact that defects in this gene are a cause of spastic paraplegia type 3. Three transcript variants encoding two different isoforms have been found for this gene.</p> <p>Alias Symbols: FSP1, GBP3, SPG3, HSN1D, SPG3A, AD-FSP, atlastin1</p> <p>Protein Size: 475</p>
-------------	--

Molecular Weight:	52 kDa
-------------------	--------

Gene ID:	51062
----------	-------

NCBI Accession:	NM_001127713 , NP_001121185
-----------------	---

UniProt:	Q8WXF7
----------	------------------------

Application Details

Application Notes:	Optimal working dilution should be determined by the investigator.
--------------------	--

Restrictions:	For Research Use only
---------------	-----------------------

Handling

Format:	Liquid
---------	--------

Concentration:	1 mg/mL
----------------	---------

Buffer:	Liquid. Purified antibody supplied in 1x PBS buffer with 0.09 % (w/v) sodium azide and 2 % sucrose.
---------	---

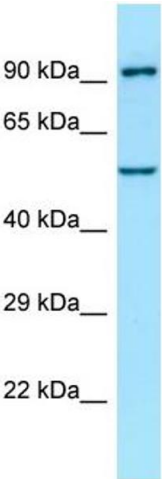
Preservative:	Sodium azide
---------------	--------------

Precaution of Use:	This product contains Sodium azide: a POISONOUS AND HAZARDOUS SUBSTANCE which should be handled by trained staff only.
--------------------	--

Handling Advice:	Avoid repeat freeze-thaw cycles.
------------------	----------------------------------

Storage:	-20 °C
----------	--------

Storage Comment:	For short term use, store at 2-8°C up to 1 week. For long term storage, store at -20°C in small aliquots to prevent freeze-thaw cycles.
------------------	---



Western Blotting

Image 1.