

Datasheet for ABIN2789996

## anti-Purinergic Receptor P2Y, G-Protein Coupled, 13 (P2RY13) (C-Term) antibody



[Go to Product page](#)

### 1 Image

#### Overview

Quantity:	100 µL
Target:	Purinergic Receptor P2Y, G-Protein Coupled, 13 (P2RY13)
Binding Specificity:	C-Term
Reactivity:	Human, Rabbit, Cow, Dog, Horse, Pig
Host:	Rabbit
Clonality:	Polyclonal
Conjugate:	Un-conjugated
Application:	Western Blotting (WB)

#### Product Details

Sequence:	VVIAKKVYDS YRKSLSKDRK NKKLEGKVF VVVAVFFVCF APFHFARVPY
Predicted Reactivity:	Cow: 93%, Dog: 77%, Horse: 79%, Human: 100%, Pig: 86%, Rabbit: 79%
Characteristics:	This is a rabbit polyclonal antibody against P2RY13. It was validated on Western Blot.
Purification:	Affinity Purified

#### Target Details

Target:	Purinergic Receptor P2Y, G-Protein Coupled, 13 (P2RY13)
Alternative Name:	P2RY13 ( <a href="#">P2RY13 Products</a> )
Background:	The product of this gene belongs to the family of G-protein coupled receptors. This family has several receptor subtypes with different pharmacological selectivity, which overlaps in some

## Target Details

---

cases, for various adenosine and uridine nucleotides. This receptor is activated by ADP.

Alias Symbols: FKSG77, GPCR1, GPR86, GPR94, P2Y13, SP174

Protein Size: 354

---

Molecular Weight: 41 kDa

---

Gene ID: 53829

---

NCBI Accession: [NM\\_176894](#), [NP\\_795713](#)

---

UniProt: [Q9BPV8](#)

---

Pathways: [cAMP Metabolic Process](#)

## Application Details

---

Application Notes: Optimal working dilutions should be determined experimentally by the investigator.

---

Comment: Antigen size: 354 AA

---

Restrictions: For Research Use only

## Handling

---

Format: Liquid

---

Concentration: Lot specific

---

Buffer: Liquid. Purified antibody supplied in 1x PBS buffer with 0.09 % (w/v) sodium azide and 2 % sucrose.

---

Preservative: Sodium azide

---

Precaution of Use: This product contains Sodium azide: a POISONOUS AND HAZARDOUS SUBSTANCE which should be handled by trained staff only.

---

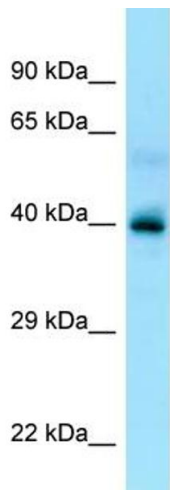
Handling Advice: Avoid repeated freeze-thaw cycles.

---

Storage: -20 °C

---

Storage Comment: For short term use, store at 2-8°C up to 1 week. For long term storage, store at -20°C in small aliquots to prevent freeze-thaw cycles.



Rabbit Anti-P2RY13 Antibody  
Catalog Number: ARP64923  
Lot Number: QC35472  
Lane: Fetal Liver Lysate

Antibody Titration: 1.0µg/ml  
Gel Concentration: 12%

### Western Blotting

Image 1.