

Datasheet for ABIN2790014 **anti-SERP1 antibody (N-Term)**



[Go to Product page](#)

1 Image

Overview

Quantity:	100 µL
Target:	SERP1
Binding Specificity:	N-Term
Reactivity:	Human, Mouse, Rat, Cow, Dog, Guinea Pig, Rabbit, Zebrafish (Danio rerio)
Host:	Rabbit
Clonality:	Polyclonal
Conjugate:	This SERP1 antibody is un-conjugated
Application:	Western Blotting (WB)

Product Details

Sequence:	IRMANEKHSK NITQRGNVAK TSRNAPEEKA SVGPWLLALF IFVVCGSAIF
Predicted Reactivity:	Cow: 100%, Dog: 100%, Guinea Pig: 100%, Human: 100%, Mouse: 100%, Rabbit: 100%, Rat: 100%, Zebrafish: 100%
Characteristics:	This is a rabbit polyclonal antibody against SERP1. It was validated on Western Blot.
Purification:	Affinity Purified

Target Details

Target:	SERP1
Alternative Name:	SERP1 (SERP1 Products)
Background:	SERP1 interacts with target proteins during their translocation into the lumen of the

Target Details

endoplasmic reticulum. SERP1 protects unfolded target proteins against degradation during ER stress. SERP1 may facilitate glycosylation of target proteins after termination of ER stress.

SERP1 may modulate the use of N-glycosylation sites on target proteins.

Alias Symbols: MGC117327, MGC133321, MGC133322, RAMP4

Protein Interaction Partner: TMEM79, LOC100355886, ASNA1, BAG6, HSPA8, DNAJB1, HSPA4, SGTA, UBC, VKORC1, APP, SCNN1G, SCNN1B, SCNN1A, SEC61A1, SEC61B, CANX,

Protein Size: 66

Molecular Weight: 7 kDa

Gene ID: 27230

NCBI Accession: [NM_014445](#), [NP_055260](#)

UniProt: [Q9Y6X1](#)

Application Details

Application Notes: Optimal working dilutions should be determined experimentally by the investigator.

Comment: Antigen size: 66 AA

Restrictions: For Research Use only

Handling

Format: Liquid

Concentration: Lot specific

Buffer: Liquid. Purified antibody supplied in 1x PBS buffer with 0.09 % (w/v) sodium azide and 2 % sucrose.

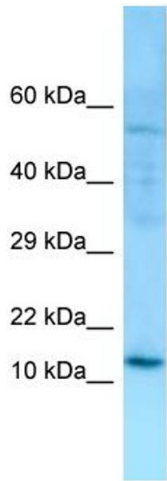
Preservative: Sodium azide

Precaution of Use: This product contains Sodium azide: a POISONOUS AND HAZARDOUS SUBSTANCE which should be handled by trained staff only.

Handling Advice: Avoid repeated freeze-thaw cycles.

Storage: -20 °C

Storage Comment: For short term use, store at 2-8°C up to 1 week. For long term storage, store at -20°C in small aliquots to prevent freeze-thaw cycles.



Rabbit Anti-SERP1 Antibody
Catalog Number: ARP64991
Lot Number: QC35535
Lane: MCF7 Cell Lysate

Antibody Titration: 1.0µg/ml
Gel Concentration: 10-20%

Western Blotting

Image 1.