

Datasheet for ABIN2790021  
**anti-GPM6A antibody (C-Term)**[Go to Product page](#)

## 3 Images

## Overview

Quantity:	100 µL
Target:	GPM6A
Binding Specificity:	C-Term
Reactivity:	Human, Mouse, Rat, Dog, Zebrafish (Danio rerio), Guinea Pig, Horse, Rabbit, Cow
Host:	Rabbit
Clonality:	Polyclonal
Conjugate:	This GPM6A antibody is un-conjugated
Application:	Western Blotting (WB), Immunohistochemistry (IHC)

## Product Details

Sequence:	IAMVHYLMVL SANWAYVKDA CRMQKYEDIK SKEEQELHDI HSTRSKERLN
Predicted Reactivity:	Cow: 100%, Dog: 100%, Guinea Pig: 100%, Horse: 100%, Human: 100%, Mouse: 100%, Rabbit: 100%, Rat: 100%, Zebrafish: 100%
Characteristics:	This is a rabbit polyclonal antibody against GPM6A. It was validated on Western Blot.
Purification:	Affinity Purified

## Target Details

Target:	GPM6A
Alternative Name:	GPM6A ( <a href="#">GPM6A Products</a> )
Background:	The function of this protein remains unknown.

## Target Details

	Alias Symbols: GPM6, M6A Protein Interaction Partner: nef, Htt, PAM16, PRKCA, Protein Size: 278
Molecular Weight:	31 kDa
Gene ID:	2823
NCBI Accession:	<a href="#">NM_005277</a> , <a href="#">NP_005268</a>
UniProt:	<a href="#">P51674</a>

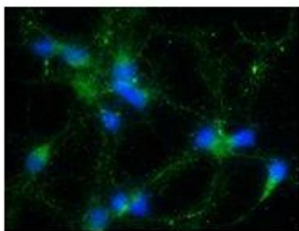
## Application Details

Application Notes:	Optimal working dilutions should be determined experimentally by the investigator.
Comment:	Antigen size: 278 AA
Restrictions:	For Research Use only

## Handling

Format:	Liquid
Concentration:	Lot specific
Buffer:	Liquid. Purified antibody supplied in 1x PBS buffer with 0.09 % (w/v) sodium azide and 2 % sucrose.
Preservative:	Sodium azide
Precaution of Use:	This product contains Sodium azide: a POISONOUS AND HAZARDOUS SUBSTANCE which should be handled by trained staff only.
Handling Advice:	Avoid repeated freeze-thaw cycles.
Storage:	-20 °C
Storage Comment:	For short term use, store at 2-8°C up to 1 week. For long term storage, store at -20°C in small aliquots to prevent freeze-thaw cycles.

GPM6A



Green: GPM6A  
Blue: DAPI

See IHC 2 Data and Customer Feedback for more information

Immunohistochemistry

**Image 1.** Primary Antibody Dilution: 1:250

Secondary Antibody: Anti-rabbit-AlexaFluor 488

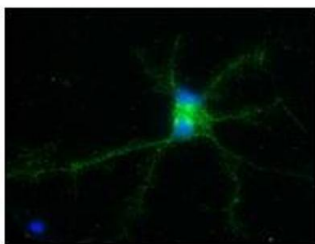
Secondary Antibody Dilution: 1:5000

Color/Signal Descriptions: GPM6A: Green DAPI: Blue

Gene Name: GPM6A

Submitted by: Anonymous

GPM6A



Green: GPM6A  
Blue: DAPI

See IHC 1 Data and Customer Feedback for more information

Immunohistochemistry

**Image 2.** Primary Antibody Dilution: 1:250

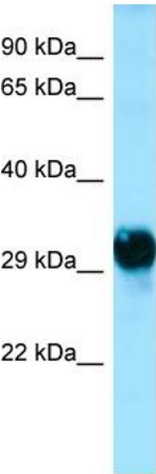
Secondary Antibody: Anti-rabbit-AlexaFluor 488

Secondary Antibody Dilution: 1:5000

Color/Signal Descriptions: GPM6A: Green DAPI: Blue

Gene Name: GPM6A

Submitted by: Anonymous



Host: Rabbit  
Target Name: GPM6A  
Sample Tissue: Fetal Brain Lysate  
Antibody Dilution: 1.0 µg/ml

Western Blotting

**Image 3.** Host: Rabbit

Target Name: GPM6A

Antibody Dilution: 1.0 µg/mL

Sample Tissue: Human brain