

Datasheet for ABIN2790025  
**anti-REPS2 antibody (C-Term)**[Go to Product page](#)

## 1 Image

## Overview

Quantity:	100 µL
Target:	REPS2
Binding Specificity:	C-Term
Reactivity:	Human, Mouse, Cow, Dog, Guinea Pig, Horse, Rabbit, Pig, Rat
Host:	Rabbit
Clonality:	Polyclonal
Conjugate:	This REPS2 antibody is un-conjugated
Application:	Western Blotting (WB)

## Product Details

Immunogen:	The immunogen is a synthetic peptide directed towards the C-terminal region of Human REPS2
Sequence:	KDVLYSQPPS KPIRRKFRPE NQATENQEPS TAASGPASAA TMKPHPTVQK
Predicted Reactivity:	Cow: 100%, Dog: 80%, Guinea Pig: 79%, Horse: 100%, Human: 100%, Mouse: 83%, Pig: 100%, Rabbit: 93%, Rat: 86%
Characteristics:	This is a rabbit polyclonal antibody against REPS2. It was validated on Western Blot.
Purification:	Affinity Purified

## Target Details

Target:	REPS2
Alternative Name:	REPS2 ( <a href="#">REPS2 Products</a> )

## Target Details

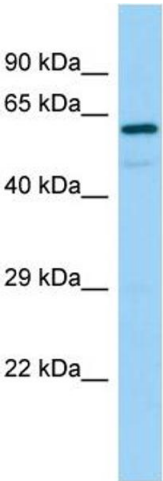
Background:	<p>The product of this gene is part of a protein complex that regulates the endocytosis of growth factor receptors. The encoded protein directly interacts with a GTPase activating protein that functions downstream of the small G protein Ral. Its expression can negatively affect receptor internalization and inhibit growth factor signaling. Multiple transcript variants encoding different isoforms have been found for this gene.</p> <p>Protein Interaction Partner: EPN1, CDK1, AP2A1, GRB2, AMPH, AR, CDK5RAP2, REPS1, RALBP1, EPS15, ASAP1, ASAP2, PXN, RALB, RELA,</p> <p>Protein Size: 521</p>
Molecular Weight:	57 kDa
Gene ID:	9185
Pathways:	<a href="#">EGFR Signaling Pathway</a>

## Application Details

Application Notes:	Optimal working dilution should be determined by the investigator.
Restrictions:	For Research Use only

## Handling

Format:	Liquid
Concentration:	1 mg/mL
Buffer:	Liquid. Purified antibody supplied in 1x PBS buffer with 0.09 % (w/v) sodium azide and 2 % sucrose.
Preservative:	Sodium azide
Precaution of Use:	This product contains Sodium azide: a POISONOUS AND HAZARDOUS SUBSTANCE which should be handled by trained staff only.
Handling Advice:	Avoid repeat freeze-thaw cycles.
Storage:	-20 °C
Storage Comment:	For short term use, store at 2-8°C up to 1 week. For long term storage, store at -20°C in small aliquots to prevent freeze-thaw cycles.



Western Blotting

**Image 1.** Host: Rabbit Target Name: REPS2 Sample Type: 721\_B Whole Cell lysates Antibody Dilution: 1.0ug/ml  
REPS2 is supported by BioGPS gene expression data to be expressed in 721\_B