

Datasheet for ABIN2790030
anti-CRIM1 antibody (C-Term)[Go to Product page](#)

1 Image

Overview

Quantity:	100 µL
Target:	CRIM1
Binding Specificity:	C-Term
Reactivity:	Human, Mouse, Rat, Horse, Cow, Guinea Pig, Dog, Rabbit, Zebrafish (Danio rerio)
Host:	Rabbit
Clonality:	Polyclonal
Conjugate:	This CRIM1 antibody is un-conjugated
Application:	Western Blotting (WB)

Product Details

Immunogen:	The immunogen is a synthetic peptide directed towards the C-terminal region of Human CRIM1
Sequence:	NQKKQWIPLL CWYRTPTKPS SLNNQLVSVD CKKGTRVQVD SSQRMLRIAE
Predicted Reactivity:	Cow: 100%, Dog: 86%, Guinea Pig: 100%, Horse: 100%, Human: 100%, Mouse: 100%, Rabbit: 93%, Rat: 100%, Zebrafish: 85%
Characteristics:	This is a rabbit polyclonal antibody against CRIM1. It was validated on Western Blot.
Purification:	Affinity Purified

Target Details

Target:	CRIM1
Alternative Name:	CRIM1 (CRIM1 Products)

Target Details

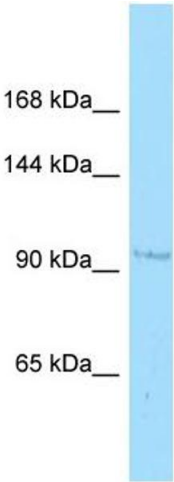
Background:	<p>This gene encodes a transmembrane protein containing six cysteine-rich repeat domains and an insulin-like growth factor-binding domain. The encoded protein may play a role in tissue development through interactions with members of the transforming growth factor beta family, such as bone morphogenetic proteins.</p> <p>Alias Symbols: MGC138194, S52</p> <p>Protein Interaction Partner: UBC, ATXN7, CACNA1A,</p> <p>Protein Size: 1036</p>
Molecular Weight:	110 kDa
Gene ID:	51232
NCBI Accession:	NM_016441 , NP_057525
UniProt:	Q9NZV1
Pathways:	Growth Factor Binding

Application Details

Application Notes:	Optimal working dilutions should be determined experimentally by the investigator.
Comment:	Antigen size: 1036 AA
Restrictions:	For Research Use only

Handling

Format:	Liquid
Concentration:	Lot specific
Buffer:	Liquid. Purified antibody supplied in 1x PBS buffer with 0.09 % (w/v) sodium azide and 2 % sucrose.
Preservative:	Sodium azide
Precaution of Use:	This product contains Sodium azide: a POISONOUS AND HAZARDOUS SUBSTANCE which should be handled by trained staff only.
Handling Advice:	Avoid repeated freeze-thaw cycles.
Storage:	-20 °C
Storage Comment:	For short term use, store at 2-8°C up to 1 week. For long term storage, store at -20°C in small aliquots to prevent freeze-thaw cycles.



Western Blotting

Image 1. WB Suggested Anti-CRIM1 Antibody Titration: 1.0 ug/ml Positive Control: Jurkat Whole Cell